

Product datasheet for **AP53152PU-N**

PAICS (N-term) Rabbit Polyclonal Antibody

Product data:

Product Type:	Primary Antibodies
Applications:	FC, IHC, WB
Recommended Dilution:	ELISA: 1/1000. Western Blot: 1/100-1/500. Flow Cytometry: 1/10-1/50. Immunohistochemistry on Paraffin Sections: 1/10-1/50.
Reactivity:	Human, Mouse
Host:	Rabbit
Isotype:	Ig
Clonality:	Polyclonal
Immunogen:	KLH conjugated synthetic peptide between 94-123 amino acids from the N-terminal region of human PAICS
Specificity:	This antibody recognizes Human and Mouse PAICS (N-term).
Formulation:	PBS containing 0.09% (W/V) Sodium Azide as preservative State: Aff - Purified State: Liquid purified Ig fraction
Concentration:	lot specific
Purification:	Protein A column, followed by peptide affinity purification
Conjugation:	Unconjugated
Storage:	Store undiluted at 2-8°C for one month or (in aliquots) at -20°C for longer. Avoid repeated freezing and thawing.
Stability:	Shelf life: one year from despatch.
Gene Name:	phosphoribosylaminoimidazole carboxylase; phosphoribosylaminoimidazolesuccinocarboxamide synthase
Database Link:	Entrez Gene 67054 Mouse Entrez Gene 10606 Human P22234



[View online »](#)

Background: This gene encodes a bifunctional enzyme containing phosphoribosylaminoimidazole carboxylase activity in its N-terminal region and phosphoribosylaminoimidazole succinocarboxamide synthetase in its C-terminal region. It catalyzes steps 6 and 7 of purine biosynthesis. The gene is closely linked and divergently transcribed with a locus that encodes an enzyme in the same pathway, and transcription of the two genes is coordinately regulated. The human genome contains several pseudogenes of this gene. Multiple transcript variants encoding different isoforms have been found for this gene.

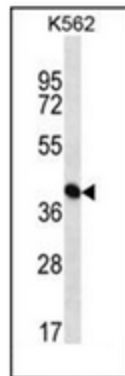
Synonyms: PAIS, AIRC

Note: **Molecular Weight:** 47079 Da

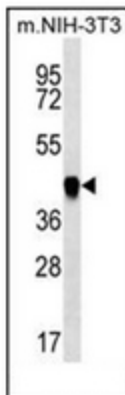
Protein Families: Druggable Genome

Protein Pathways: Metabolic pathways, Purine metabolism

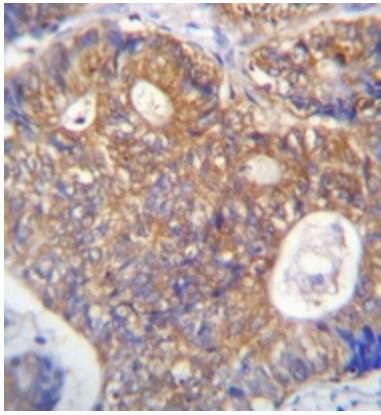
Product images:



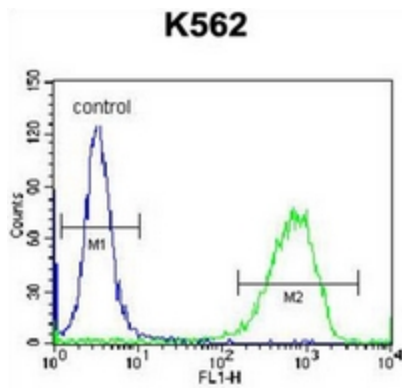
Western blot analysis of PAICS Antibody (N-term) in K562 cell line lysates (35ug/lane). This demonstrates the PAICS antibody detected the PAICS protein (arrow).



Western blot analysis of PAICS Antibody (N-term) in mouse NIH-3T3 cell line lysates (35ug/lane). This demonstrates the PAICS antibody detected the PAICS protein (arrow).



Immunohistochemistry analysis in formalin fixed and paraffin embedded human colon carcinoma reacted with PAICS Antibody (N-term), which was peroxidase conjugated to the secondary antibody and followed by DAB staining. This data demonstrates the use of PAICS Antibody (N-term) for immunohistochemistry. Clinical relevance has not been evaluated.



Flow cytometric analysis of K562 cells using PAICS Antibody (N-term) (right histogram) compared to a negative control cell (left histogram). FITC-conjugated donkey-anti-rabbit secondary antibodies were used for the analysis.