

Product datasheet for **AP53151PU-N**

PAGE5 (C-term) Rabbit Polyclonal Antibody

Product data:

Product Type:	Primary Antibodies
Applications:	IHC, WB
Recommended Dilution:	ELISA: 1/1000. Western Blot: 1/100-1/500. Immunohistochemistry on Paraffin Sections: 1/10-1/50.
Reactivity:	Human
Host:	Rabbit
Isotype:	Ig
Clonality:	Polyclonal
Immunogen:	KLH conjugated synthetic peptide between 109-130 amino acids from the C-terminal region of human PAGE5
Specificity:	This antibody recognizes Human PAGE5 (C-term).
Formulation:	PBS containing 0.09% (W/V) Sodium Azide as preservative State: Aff - Purified State: Liquid purified Ig fraction
Concentration:	lot specific
Purification:	Protein A column, followed by peptide affinity purification
Conjugation:	Unconjugated
Storage:	Store undiluted at 2-8°C for one month or (in aliquots) at -20°C for longer. Avoid repeated freezing and thawing.
Stability:	Shelf life: one year from despatch.
Gene Name:	PAGE family member 5
Database Link:	Entrez Gene 90737 Human Q96GU1



[View online »](#)

Background:

This gene is a member of the GAGE family, which is expressed in a variety of tumors and in some fetal and reproductive tissues. The protein encoded by this gene shares a sequence similarity with other GAGE/PAGE proteins. It may also belong to a family of CT (cancer-testis) antigens. Multiple alternatively spliced transcript variants encoding distinct isoforms have been found for this gene, but the biological validity of some variants have not been determined.

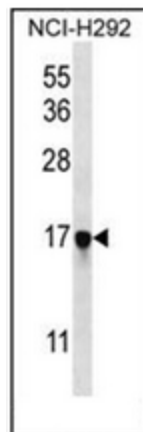
Synonyms:

PAGE-5, GAGEE1, CT16.1

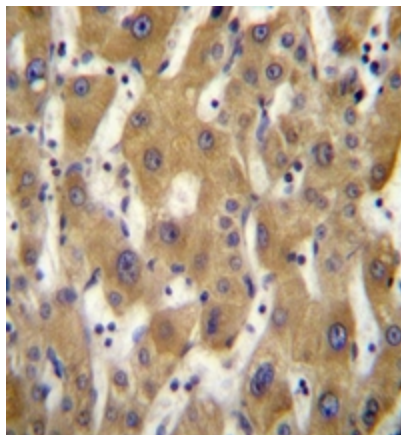
Note:

Molecular Weight: 14046 Da

Product images:



Western blot analysis of PAGE5 Antibody (C-term) in NCI-H292 cell line lysates (35ug/lane). This demonstrates the PAGE5 antibody detected the PAGE5 protein (arrow).



Immunohistochemistry analysis in formalin fixed and paraffin embedded human liver tissue reacted with PAGE5 Antibody (C-term), which was peroxidase conjugated to the secondary antibody and followed by DAB staining. This data demonstrates the use of PAGE5 Antibody (C-term) for immunohistochemistry. Clinical relevance has not been evaluated.