

Product datasheet for **AP53148PU-N**

PABP2 (PABPN1) (C-term) Rabbit Polyclonal Antibody

Product data:

Product Type:	Primary Antibodies
Applications:	WB
Recommended Dilution:	ELISA: 1/1000. Western Blot: 1/100-1/500.
Reactivity:	Human
Host:	Rabbit
Isotype:	Ig
Clonality:	Polyclonal
Immunogen:	KLH conjugated synthetic peptide between 269-298 amino acids from the C-terminal region of human PABPN1
Specificity:	This antibody recognizes Human PABPN1 (C-term).
Formulation:	PBS containing 0.09% (W/V) Sodium Azide as preservative State: Aff - Purified State: Liquid purified Ig fraction
Concentration:	lot specific
Purification:	Protein A column, followed by peptide affinity purification
Conjugation:	Unconjugated
Storage:	Store undiluted at 2-8°C for one month or (in aliquots) at -20°C for longer. Avoid repeated freezing and thawing.
Stability:	Shelf life: one year from despatch.
Gene Name:	poly(A) binding protein nuclear 1
Database Link:	Entrez Gene 8106 Human Q86U42



[View online »](#)

Background:

This gene encodes an abundant nuclear protein that binds with high affinity to nascent poly(A) tails. The protein is required for progressive and efficient polymerization of poly(A) tails on the 3' ends of eukaryotic genes and controls the size of the poly(A) tail to about 250 nt. At steady-state, this protein is localized in the nucleus whereas a different poly(A) binding protein is localized in the cytoplasm. An expansion of the trinucleotide (GCG) repeat from normal 6 to 8-13 at the 5' end of the coding region of this gene leads to autosomal dominant oculopharyngeal muscular dystrophy (OPMD) disease. Multiple splice variants have been described but their full-length nature is not known. One splice variant includes introns 1 and 6 but no protein is formed.

Synonyms:

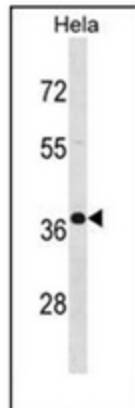
PAB2, PABP2, PABP-2, Polyadenylate-binding protein 2

Note:

Molecular Weight: 32749 Da

Protein Families:

Druggable Genome

Product images:

Western blot analysis of PABPN1 Antibody (C-term) in HeLa cell line lysates (35ug/lane). This demonstrates the PABPN1 antibody detected the PABPN1 protein (arrow).