

## Product datasheet for **AP53147PU-N**

### **PABPC4L (C-term) Rabbit Polyclonal Antibody**

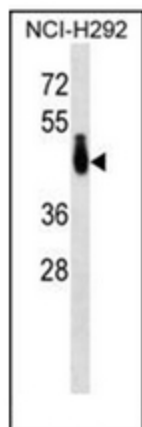
#### **Product data:**

Product Type:	Primary Antibodies
Applications:	WB
Recommended Dilution:	<b>ELISA:</b> 1/1000. <b>Western Blot:</b> 1/100-1/500.
Reactivity:	Human
Host:	Rabbit
Isotype:	Ig
Clonality:	Polyclonal
Immunogen:	KLH conjugated synthetic peptide between 260-290 amino acids from the C-terminal region of human PABPC4L
Specificity:	This antibody recognizes Human PABPC4L (C-term).
Formulation:	PBS containing 0.09% (W/V) Sodium Azide as preservative State: Aff - Purified State: Liquid purified Ig fraction
Concentration:	lot specific
Purification:	Protein A column, followed by peptide affinity purification
Conjugation:	Unconjugated
Storage:	Store undiluted at 2-8°C for one month or (in aliquots) at -20°C for longer. Avoid repeated freezing and thawing.
Stability:	Shelf life: one year from despatch.
Database Link:	<a href="#">P0CB38</a>
Background:	PABPC4L may bind RNA (Potential).
Synonyms:	Polyadenylate-binding protein 4-like
Note:	<b>Molecular Weight:</b> 41854 Da



[View online »](#)

## Product images:



Western blot analysis of PABPC4L Antibody (C-term) Cat.-No AP53147PU-N in NCI-H292 cell line lysates (35ug/lane). This demonstrates the PABPC4L antibody detected the PABPC4L protein (arrow).