

Product datasheet for **AP53145PU-N**

P2Y6 (P2RY6) (C-term) Rabbit Polyclonal Antibody

Product data:

Product Type:	Primary Antibodies
Applications:	WB
Recommended Dilution:	ELISA: 1/1000. Western Blot: 1/100-1/500.
Reactivity:	Human
Host:	Rabbit
Isotype:	Ig
Clonality:	Polyclonal
Immunogen:	KLH conjugated synthetic peptide between 285-314 amino acids from the C-terminal region of human P2RY6 / P2Y6
Specificity:	This antibody recognizes Human P2RY6 / P2Y6 (C-term).
Formulation:	PBS containing 0.09% (W/V) Sodium Azide as preservative State: Aff - Purified State: Liquid purified Ig fraction
Concentration:	lot specific
Purification:	Protein A column, followed by peptide affinity purification
Conjugation:	Unconjugated
Storage:	Store undiluted at 2-8°C for one month or (in aliquots) at -20°C for longer. Avoid repeated freezing and thawing.
Stability:	Shelf life: one year from despatch.
Gene Name:	pyrimidinergic receptor P2Y6
Database Link:	Entrez Gene 5031 Human Q15077
Background:	The product of this gene belongs to the family of G-protein coupled receptors. This family has several receptor subtypes with different pharmacological selectivity, which overlaps in some cases, for various adenosine and uridine nucleotides. This receptor is responsive to UDP, partially responsive to UTP and ADP, and not responsive to ATP. Four transcript variants encoding the same isoform have been identified for this gene. [provided by RefSeq].

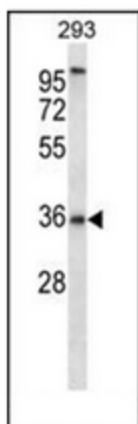


[View online »](#)

Synonyms: P2Y purinoceptor 6, Purinergic receptor, PP2891

Note: **Molecular Weight:** 36429 Da

Product images:



Western blot analysis of P2RY6 / P2Y2 Antibody (C-term) in 293 cell line lysates (35ug/lane). This demonstrates the P2RY6 antibody detected the P2RY6 protein (arrow).