

Product datasheet for **AP53144PU-N**

P2Y2 (P2RY2) (C-term) Rabbit Polyclonal Antibody

Product data:

Product Type:	Primary Antibodies
Applications:	WB
Recommended Dilution:	ELISA: 1/1000. Western Blot: 1/100-1/500.
Reactivity:	Human
Host:	Rabbit
Isotype:	Ig
Clonality:	Polyclonal
Immunogen:	KLH conjugated synthetic peptide between 323-352 amino acids from the C-terminal region of human P2RY2 / P2Y2
Specificity:	This antibody recognizes Human P2RY2 / P2Y2 (C-term).
Formulation:	PBS containing 0.09% (W/V) Sodium Azide as preservative State: Aff - Purified State: Liquid purified Ig fraction
Concentration:	lot specific
Purification:	Protein A column, followed by peptide affinity purification
Conjugation:	Unconjugated
Storage:	Store undiluted at 2-8°C for one month or (in aliquots) at -20°C for longer. Avoid repeated freezing and thawing.
Stability:	Shelf life: one year from despatch.
Gene Name:	purinergic receptor P2Y2
Database Link:	Entrez Gene 5029 Human P41231



[View online »](#)

Background:

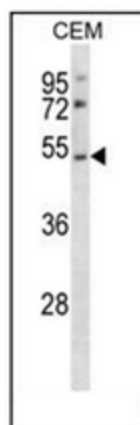
The product of this gene belongs to the family of G-protein coupled receptors. This family has several receptor subtypes with different pharmacological selectivity, which overlaps in some cases, for various adenosine and uridine nucleotides. This receptor is responsive to both adenosine and uridine nucleotides. It may participate in control of the cell cycle of endometrial carcinoma cells. Three transcript variants encoding the same protein have been identified for this gene.

Synonyms:

P2Y purinoceptor 2, P2U purinoceptor 1, P2RU1, P2U1, Purinergic receptor, ATP receptor

Note:

Molecular Weight: 42273 Da

Product images:

Western blot analysis of P2RY2 / P2Y2 Antibody (C-term) in CEM cell line lysates (35ug/lane). This demonstrates the P2RY2 antibody detected the P2RY2 protein (arrow).