

## Product datasheet for **AP53141PU-N**

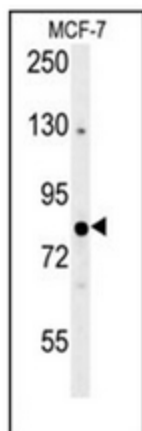
### **OXR1 (Center) Rabbit Polyclonal Antibody**

#### **Product data:**

Product Type:	Primary Antibodies
Applications:	WB
Recommended Dilution:	<b>ELISA:</b> 1/1000. <b>Western Blot:</b> 1/100-1/500.
Reactivity:	Human
Host:	Rabbit
Isotype:	Ig
Clonality:	Polyclonal
Immunogen:	KLH conjugated synthetic peptide between 514~544 amino acids from the Central region of human OXR1
Specificity:	This antibody recognizes Human OXR1 (Center).
Formulation:	PBS containing 0.09% (W/V) Sodium Azide as preservative State: Aff - Purified State: Liquid purified Ig fraction
Concentration:	lot specific
Purification:	Protein A column, followed by peptide affinity purification
Conjugation:	Unconjugated
Storage:	Store undiluted at 2-8°C for one month or (in aliquots) at -20°C for longer. Avoid repeated freezing and thawing.
Stability:	Shelf life: one year from despatch.
Gene Name:	oxidation resistance 1
Database Link:	<a href="#">Entrez Gene 55074 Human Q8N573</a>
Background:	OXR1 may be involved in protection from oxidative damage.
Synonyms:	Oxidation resistance protein 1
Note:	<b>Molecular Weight:</b> 84951 Da



[View online »](#)

**Product images:**

Western blot analysis of OXR1 Antibody (Center) in MCF-7 cell line lysates (35ug/lane). This demonstrates the OXR1 antibody detected the OXR1 protein (arrow).