

Product datasheet for **AP53134PU-N**

OTX1 (Center) Rabbit Polyclonal Antibody

Product data:

Product Type:	Primary Antibodies
Applications:	WB
Recommended Dilution:	ELISA: 1/1000. Western Blot: 1/100-1/500.
Reactivity:	Human
Host:	Rabbit
Isotype:	Ig
Clonality:	Polyclonal
Immunogen:	KLH conjugated synthetic peptide between 86-116 amino acids from the Central region of human OTX1
Specificity:	This antibody recognizes Human OTX1 (Center).
Formulation:	PBS containing 0.09% (W/V) Sodium Azide as preservative State: Aff - Purified State: Liquid purified Ig fraction
Concentration:	lot specific
Purification:	Protein A column, followed by peptide affinity purification
Conjugation:	Unconjugated
Storage:	Store undiluted at 2-8°C for one month or (in aliquots) at -20°C for longer. Avoid repeated freezing and thawing.
Stability:	Shelf life: one year from despatch.
Gene Name:	orthodenticle homeobox 1
Database Link:	Entrez Gene 5013 Human P32242
Background:	This gene encodes a member of the bicoid sub-family of homeodomain-containing transcription factors. The encoded protein acts as a transcription factor and may play a role in brain and sensory organ development. A similar protein in mice is required for proper brain and sensory organ development and can cause epilepsy.
Synonyms:	Homeobox protein OTX-1, Orthodenticle homolog 1

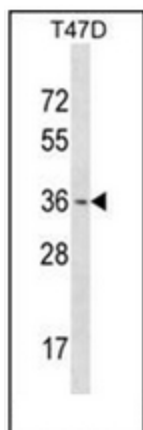


[View online »](#)

Note: **Molecular Weight:** 37327 Da

Protein Families: Druggable Genome, Transcription Factors

Product images:



Western blot analysis of OTX1 Antibody (Center) in T47D cell line lysates (35ug/lane). This demonstrates the OTX1 antibody detected the OTX1 protein (arrow).