

## Product datasheet for **AP53133PU-N**

### DUBA2 (OTUD6A) (Center) Rabbit Polyclonal Antibody

#### Product data:

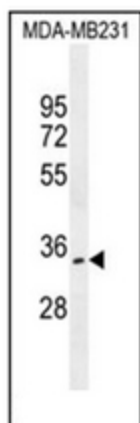
Product Type:	Primary Antibodies
Applications:	WB
Recommended Dilution:	<b>ELISA:</b> 1/1000. <b>Western Blot:</b> 1/100-1/500.
Reactivity:	Human
Host:	Rabbit
Isotype:	Ig
Clonality:	Polyclonal
Immunogen:	KLH conjugated synthetic peptide between 79-108 amino acids from the Central region of human OTUD6A
Specificity:	This antibody recognizes Human OTUD6A (Center).
Formulation:	PBS containing 0.09% (W/V) Sodium Azide as preservative State: Aff - Purified State: Liquid purified Ig fraction
Concentration:	lot specific
Purification:	Protein A column, followed by peptide affinity purification
Conjugation:	Unconjugated
Storage:	Store undiluted at 2-8°C for one month or (in aliquots) at -20°C for longer. Avoid repeated freezing and thawing.
Stability:	Shelf life: one year from despatch.
Gene Name:	OTU deubiquitinase 6A
Database Link:	<a href="#">Entrez Gene 139562 Human Q7L8S5</a>
Background:	Deubiquitinating enzymes (DUBs; see MIM 603478) are proteases that specifically cleave ubiquitin (MIM 191339) linkages, negating the action of ubiquitin ligases. DUBA2 belongs to a DUB subfamily characterized by an ovarian tumor (OTU) domain. [supplied by OMIM].
Synonyms:	DUBA2, DUBA-2



[View online »](#)

Note: **Molecular Weight:** 33300 Da

**Product images:**



Western blot analysis of OTUD6A Antibody (Center) in MDA-MB231 cell line lysates (35ug/lane). This demonstrates the OTUD6A antibody detected the OTUD6A protein (arrow)