

## Product datasheet for **AP53132PU-N**

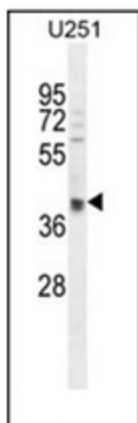
### OTUD3 (Center) Rabbit Polyclonal Antibody

#### Product data:

|                       |  |
|-----------------------|--|
| Product Type:         | Primary Antibodies   |
| Applications:         | WB   |
| Recommended Dilution: | <b>Peptide ELISA:</b> 1/1000.<br><b>Western Blot:</b> 1/1000.  |
| Reactivity:           | Human  |
| Host:                 | Rabbit   |
| Isotype:              | Ig   |
| Clonality:            | Polyclonal   |
| Immunogen:            | KLH conjugated synthetic peptide between 192-220 amino acids from the Central region of human OTUD3.                   |
| Specificity:          | This antibody recognizes Human OTUD3 (Center).   |
| Formulation:          | PBS containing 0.09% (W/V) Sodium Azide as preservative<br>State: Aff - Purified<br>State: Liquid purified Ig fraction |
| Concentration:        | lot specific   |
| Purification:         | Protein A column, followed by peptide affinity purification  |
| Conjugation:          | Unconjugated   |
| Storage:              | Store undiluted at 2-8°C for one month or (in aliquots) at -20°C for longer.<br>Avoid repeated freezing and thawing.   |
| Stability:            | Shelf life: one year from despatch.  |
| Gene Name:            | OTU deubiquitinase 3   |
| Database Link:        | <a href="#">Entrez Gene 23252 Human Q5T2D3</a>   |
| Synonyms:             | OTU domain-containing protein 3, KIAA0459  |
| Note:                 | <b>Molecular Weight:</b> 45124 Da  |



[View online »](#)

**Product images:**

Western blot analysis of OTUD3 Antibody (Center) in U251 cell line lysates (35ug/lane). This demonstrates the OTUD3 antibody detected the OTUD3 protein (arrow)