

Product datasheet for **AP53131PU-N**

OTUD1 (Center) Rabbit Polyclonal Antibody

Product data:

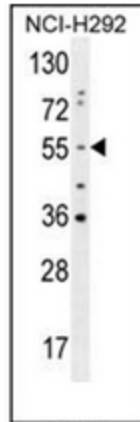
Product Type:	Primary Antibodies
Applications:	IHC, WB
Recommended Dilution:	ELISA: 1/1000. Western Blot: 1/100-1/500. Immunohistochemistry on Paraffin Sections: 1/50-1/100.
Reactivity:	Human
Host:	Rabbit
Isotype:	Ig
Clonality:	Polyclonal
Immunogen:	KLH conjugated synthetic peptide between 289-318 amino acids from the Central region of human OTUD1
Specificity:	This antibody recognizes Human OTUD1 (Center).
Formulation:	PBS containing 0.09% (W/V) Sodium Azide as preservative State: Aff - Purified State: Liquid purified Ig fraction
Concentration:	lot specific
Purification:	Protein A column, followed by peptide affinity purification
Conjugation:	Unconjugated
Storage:	Store undiluted at 2-8°C for one month or (in aliquots) at -20°C for longer. Avoid repeated freezing and thawing.
Stability:	Shelf life: one year from despatch.
Gene Name:	OTU deubiquitinase 1
Database Link:	Entrez Gene 220213 Human Q5VV17
Background:	Deubiquitinating enzymes (DUBs; see MIM 603478) are proteases that specifically cleave ubiquitin (MIM 191339) linkages, negating the action of ubiquitin ligases. DUBA7 belongs to a DUB subfamily characterized by an ovarian tumor (OTU) domain. [supplied by OMIM].
Synonyms:	OTU domain-containing protein 1, DUBA7, OTDC1, DUBA-7



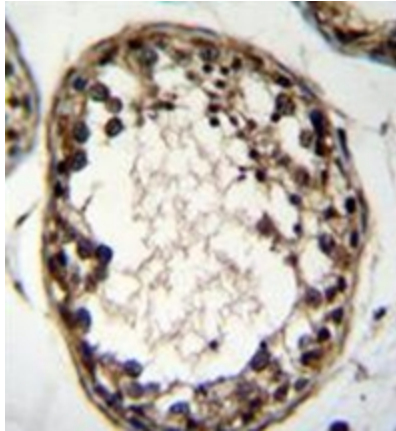
[View online »](#)

Note: **Molecular Weight:** 51063 Da

Product images:



Western blot analysis of OTUD1 Antibody (Center) in NCI-H292 cell line lysates (35ug/lane). This demonstrates the OTUD1 antibody detected the OTUD1 protein (arrow).



Immunohistochemistry analysis in formalin fixed and paraffin embedded human testis tissue reacted with OTUD1 Antibody (Center), which was peroxidase conjugated to the secondary antibody and followed by DAB staining. This data demonstrates the use of OTUD1 Antibody (Center) for immunohistochemistry. Clinical relevance has not been evaluated.