

Product datasheet for **AP53128PU-N**

OTOP1 (Center) Rabbit Polyclonal Antibody

Product data:

Product Type:	Primary Antibodies
Applications:	IHC, WB
Recommended Dilution:	ELISA: 1/1000. Western Blot: 1/100-1/500. Immunohistochemistry on Paraffin Sections: 1/10-1/50.
Reactivity:	Human, Mouse
Host:	Rabbit
Isotype:	Ig
Clonality:	Polyclonal
Immunogen:	KLH conjugated synthetic peptide between 367-396 amino acids from the Central region of Human Otopetrin-1
Specificity:	This antibody recognizes Human and Mouse Otopetrin-1 (Center).
Formulation:	PBS containing 0.09% (W/V) Sodium Azide as preservative State: Aff - Purified State: Liquid purified Ig fraction
Concentration:	lot specific
Purification:	Protein A column, followed by peptide affinity purification
Conjugation:	Unconjugated
Storage:	Store undiluted at 2-8°C for one month or (in aliquots) at -20°C for longer. Avoid repeated freezing and thawing.
Stability:	Shelf life: one year from despatch.
Gene Name:	otopetrin 1
Database Link:	Entrez Gene 21906 Mouse Entrez Gene 133060 Human Q7RTM1
Background:	OTOP1 is required for normal formation of otoconia in the inner ear. Inhibits P2Y purinoceptors. Modulates calcium homeostasis and influx of calcium in response to extracellular ATP (By similarity).
Synonyms:	OTOP1

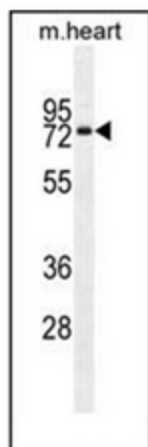


[View online »](#)

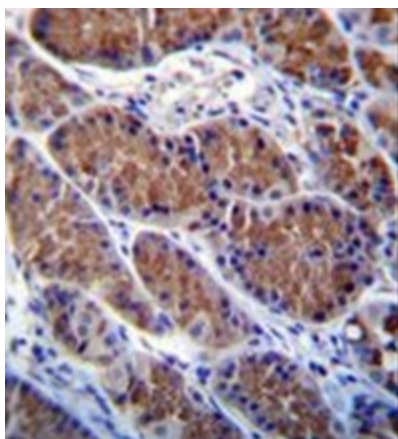
Note: **Molecular Weight:** 67353 Da

Protein Families: Transmembrane

Product images:



Western blot analysis of Otopetrin-1 Antibody (Center) in mouse heart tissue lysates (35ug/lane). This demonstrates the OTOP1 antibody detected the OTOP1 protein (arrow).



Immunohistochemistry analysis in formalin fixed and paraffin embedded human stomach tissue reacted with Otopetrin-1 Antibody (Center), which was peroxidase conjugated to the secondary antibody and followed by DAB staining. This data demonstrates the use of OTOP1 Antibody (Center) for immunohistochemistry. Clinical relevance has not been evaluated.