

Product datasheet for **AP53125PU-N**

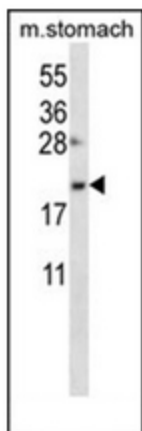
OSTC (C-term) Rabbit Polyclonal Antibody

Product data:

Product Type:	Primary Antibodies
Applications:	WB
Recommended Dilution:	ELISA: 1/1000. Western Blot: 1/100-1/500.
Reactivity:	Human, Mouse
Host:	Rabbit
Isotype:	Ig
Clonality:	Polyclonal
Immunogen:	KLH conjugated synthetic peptide between 89-117 amino acids from the C-terminal region of human DC2 / OSTC
Specificity:	This antibody recognizes Human and Mouse DC2 / OSTC (C-term).
Formulation:	PBS containing 0.09% (W/V) Sodium Azide as preservative State: Aff - Purified State: Liquid purified Ig fraction
Concentration:	lot specific
Purification:	Protein A column, followed by peptide affinity purification
Conjugation:	Unconjugated
Storage:	Store undiluted at 2-8°C for one month or (in aliquots) at -20°C for longer. Avoid repeated freezing and thawing.
Stability:	Shelf life: one year from despatch.
Gene Name:	oligosaccharyltransferase complex subunit (non-catalytic)
Database Link:	Entrez Gene 66357 Mouse Entrez Gene 58505 Human Q9NRP0
Synonyms:	Oligosaccharyltransferase complex subunit OSTC, Hydrophobic protein HSF-28
Note:	Molecular Weight: 16829 Da
Protein Families:	Transmembrane



[View online »](#)

Product images:

Western blot analysis of DC2 / OSTC Antibody (C-term) in mouse stomach tissue lysates (35ug/lane). This demonstrates the OSTC antibody detected the OSTC protein (arrow).