

## Product datasheet for **AP53123PU-N**

### ORP1 (OSBPL1A) (C-term) Rabbit Polyclonal Antibody

#### Product data:

|                       |  |
|-----------------------|--|
| Product Type:         | Primary Antibodies   |
| Applications:         | WB   |
| Recommended Dilution: | <b>ELISA:</b> 1/1000.<br><b>Western Blot:</b> 1/100-1/500.   |
| Reactivity:           | Human  |
| Host:                 | Rabbit   |
| Isotype:              | Ig   |
| Clonality:            | Polyclonal   |
| Immunogen:            | KLH conjugated synthetic peptide between 734-763 amino acids from the C-terminal region of Human OSBPL1A   |
| Specificity:          | This antibody recognizes Human OSBPL1A (C-term).   |
| Formulation:          | PBS containing 0.09% (W/V) Sodium Azide as preservative<br>State: Aff - Purified<br>State: Liquid purified Ig fraction   |
| Concentration:        | lot specific   |
| Purification:         | Protein A column, followed by peptide affinity purification  |
| Conjugation:          | Unconjugated   |
| Storage:              | Store undiluted at 2-8°C for one month or (in aliquots) at -20°C for longer.<br>Avoid repeated freezing and thawing.   |
| Stability:            | Shelf life: one year from despatch.  |
| Gene Name:            | oxysterol binding protein like 1A  |
| Database Link:        | <a href="#">Entrez Gene 114876 Human Q9BXW6</a>  |
| Background:           | This gene encodes a member of the oxysterol-binding protein (OSBP) family, a group of intracellular lipid receptors. Most members contain an N-terminal pleckstrin homology domain and a highly conserved C-terminal OSBP-like sterol-binding domain, although some members contain only the sterol-binding domain. Transcript variants derived from alternative promoter usage and/or alternative splicing exist; they encode different isoforms. |

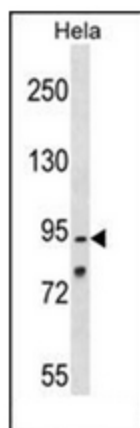


[View online »](#)

**Synonyms:** OSBP-related protein 1, ORP-1, ORP1, OSBP8, OSBPL1, OSBPL1B

**Note:** **Molecular Weight:** 108470 Da

**Product images:**



Western blot analysis of OSBPL1A Antibody (C-term) in HeLa cell line lysates (35ug/lane). This demonstrates the OSBPL1A antibody detected the OSBPL1A protein (arrow)