

Product datasheet for **AP53121PU-N**

ORMDL2 (Center) Rabbit Polyclonal Antibody

Product data:

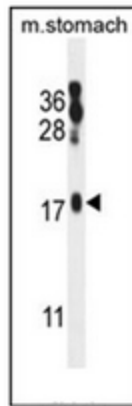
Product Type:	Primary Antibodies
Applications:	IHC, WB
Recommended Dilution:	ELISA: 1/1000. Western Blot: 1/100-1/500. Immunohistochemistry on Paraffin Sections: 1/50-1/100.
Reactivity:	Human, Mouse
Host:	Rabbit
Isotype:	Ig
Clonality:	Polyclonal
Immunogen:	KLH conjugated synthetic peptide between 56-85 amino acids from the Central region of human ORM1-like protein 2
Specificity:	This antibody recognizes Human and Mouse ORM1-like protein 2 (Center).
Formulation:	PBS containing 0.09% (W/V) Sodium Azide as preservative State: Aff - Purified State: Liquid purified Ig fraction
Concentration:	lot specific
Purification:	Protein A column, followed by peptide affinity purification
Conjugation:	Unconjugated
Storage:	Store undiluted at 2-8°C for one month or (in aliquots) at -20°C for longer. Avoid repeated freezing and thawing.
Stability:	Shelf life: one year from despatch.
Gene Name:	ORMDL sphingolipid biosynthesis regulator 2
Database Link:	Entrez Gene 29095 Human Q53FV1
Background:	Negative regulator of sphingolipid synthesis.
Synonyms:	ORMDL2, HSPC160, MSTP095
Note:	Molecular Weight: 17363 Da



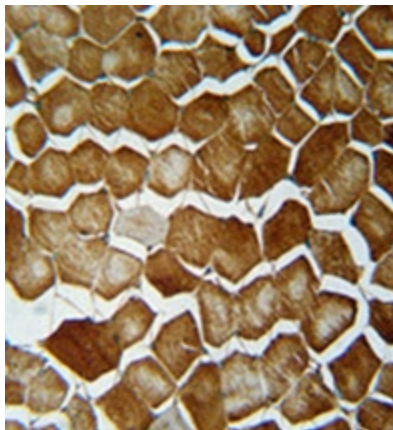
[View online »](#)

Protein Families: Transmembrane

Product images:



Western blot analysis of ORMDL2 Antibody (Center) in mouse stomach tissue lysates (35ug/lane). This demonstrates the ORMDL2 antibody detected the ORMDL2 protein (arrow).



Immunohistochemistry analysis in formalin fixed and paraffin embedded human skeletal muscle reacted with ORMDL2 Antibody (Center) peroxidase conjugated to the secondary antibody and followed by DAB staining. This data demonstrates the use of the ORMDL2 Antibody (Center) for immunohistochemistry. Clinical relevance has not been evaluated.