

Product datasheet for **AP53120PU-N**

ORMDL3 (Center) Rabbit Polyclonal Antibody

Product data:

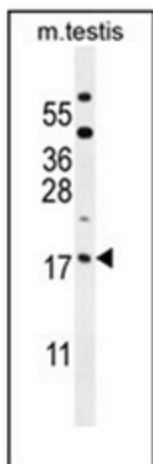
Product Type:	Primary Antibodies
Applications:	WB
Recommended Dilution:	ELISA: 1/1000. Western Blot: 1/100-1/500.
Reactivity:	Human, Mouse
Host:	Rabbit
Isotype:	Ig
Clonality:	Polyclonal
Immunogen:	KLH conjugated synthetic peptide between 56-85 amino acids from the Central region of human ORM1-like protein
Specificity:	This antibody recognizes Human and Mouse ORM1-like protein 3 (Center).
Formulation:	PBS containing 0.09% (W/V) Sodium Azide as preservative State: Aff - Purified State: Liquid purified Ig fraction
Concentration:	lot specific
Purification:	Protein A column, followed by peptide affinity purification
Conjugation:	Unconjugated
Storage:	Store undiluted at 2-8°C for one month or (in aliquots) at -20°C for longer. Avoid repeated freezing and thawing.
Stability:	Shelf life: one year from despatch.
Gene Name:	ORMDL sphingolipid biosynthesis regulator 3
Database Link:	Entrez Gene 94103 Human Q8N138
Background:	Negative regulator of sphingolipid synthesis. May indirectly regulate endoplasmic reticulum-mediated Ca ⁺² signaling.
Synonyms:	ORMDL3
Note:	Molecular Weight: 17495 Da



[View online »](#)

Protein Families: Transmembrane

Product images:



Western blot analysis of ORMDL3 Antibody (Center) in mouse testis tissue lysates (35ug/lane). This demonstrates the ORMDL3 antibody detected the ORMDL3 protein (arrow).