

Product datasheet for **AP53115PU-N**

ORAI1 (Center) Rabbit Polyclonal Antibody

Product data:

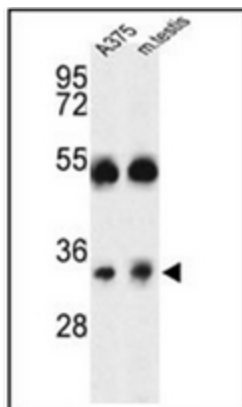
Product Type:	Primary Antibodies
Applications:	IHC, WB
Recommended Dilution:	ELISA: 1/1000. Western Blot: 1/100-1/500. Immunohistochemistry on Paraffin Sections: 1/50-1/100.
Reactivity:	Human, Mouse
Host:	Rabbit
Isotype:	Ig
Clonality:	Polyclonal
Immunogen:	KLH conjugated synthetic peptide between 152~181 amino acids from the Center region of human ORAI1
Specificity:	This antibody recognizes Human and Mouse ORAI1 (Center).
Formulation:	PBS containing 0.09% (W/V) Sodium Azide as preservative State: Aff - Purified State: Liquid purified Ig fraction
Concentration:	lot specific
Purification:	Protein A column, followed by peptide affinity purification
Conjugation:	Unconjugated
Storage:	Store undiluted at 2-8°C for one month or (in aliquots) at -20°C for longer. Avoid repeated freezing and thawing.
Stability:	Shelf life: one year from despatch.
Gene Name:	ORAI calcium release-activated calcium modulator 1
Database Link:	Entrez Gene 109305 Mouse Entrez Gene 84876 Human Q96D31
Background:	ORAI1 is a plasma membrane protein essential for store-operated calcium entry.
Synonyms:	ORAI-1, CRACM1, TMEM142A, Protein orai-1, Transmembrane protein 142A
Note:	Molecular Weight: 32668 Da



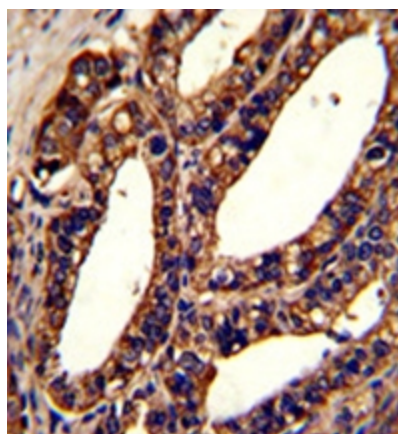
[View online »](#)

Protein Families: Transmembrane

Product images:



Western blot analysis of ORAI1 Antibody (Center) in A375 cell line and mouse testis tissue lysates (35ug/lane). ORAI1 (arrow) was detected using the purified Pab.



Formalin-fixed and paraffin-embedded human prostate carcinoma reacted with ORAI1 Antibody (Center), which was peroxidase-conjugated to the secondary antibody, followed by DAB staining. This data demonstrates the use of this antibody for immunohistochemistry; clinical relevance has not been evaluated.