

Product datasheet for **AP53110PU-N**

OR8K3 (C-term) Rabbit Polyclonal Antibody

Product data:

| | |
|-----------------------|--|
| Product Type: | Primary Antibodies |
| Applications: | WB |
| Recommended Dilution: | ELISA: 1/1000. Western Blot: 1/100-1/500. |
| Reactivity: | Human |
| Host: | Rabbit |
| Isotype: | Ig |
| Clonality: | Polyclonal |
| Immunogen: | KLH conjugated synthetic peptide between 242-271 amino acids from the C-terminal region of human OR8K3 |
| Specificity: | This antibody recognizes Human OR8K3 (C-term). |
| Formulation: | PBS containing 0.09% (W/V) Sodium Azide as preservative State: Aff - Purified State: Liquid purified Ig fraction |
| Concentration: | lot specific |
| Purification: | Protein A column, followed by peptide affinity purification |
| Conjugation: | Unconjugated |
| Storage: | Store undiluted at 2-8°C for one month or (in aliquots) at -20°C for longer. Avoid repeated freezing and thawing. |
| Stability: | Shelf life: one year from despatch. |
| Gene Name: | olfactory receptor family 8 subfamily K member 3 (gene/pseudogene) |
| Database Link: | Entrez Gene 219473 Human Q8NH51 |



[View online »](#)

Background:

Olfactory receptors interact with odorant molecules in the nose, to initiate a neuronal response that triggers the perception of a smell. The olfactory receptor proteins are members of a large family of G-protein-coupled receptors (GPCR) arising from single coding-exon genes. Olfactory receptors share a 7-transmembrane domain structure with many neurotransmitter and hormone receptors and are responsible for the recognition and G protein-mediated transduction of odorant signals. The olfactory receptor gene family is the largest in the genome. The nomenclature assigned to the olfactory receptor genes and proteins for this organism is independent of other organisms.

Synonyms:

Olfactory receptor OR11-181, Olfactory receptor 8K3

Note:

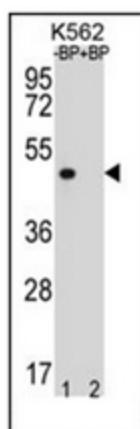
Molecular Weight: 35463 Da

Protein Families:

Transmembrane

Protein Pathways:

Olfactory transduction

Product images:

Western blot analysis of OR8K3 Antibody (C-term) pre-incubated without (lane 1) and with (lane 2) blocking peptide in K562 cell line lysate. OR8K3 Antibody (C-term) (arrow) was detected using the purified Pab (1:60/250 dilution).