

Product datasheet for **AP53107PU-N**

OR8B8 (C-term) Rabbit Polyclonal Antibody

Product data:

Product Type:	Primary Antibodies
Applications:	IHC, WB
Recommended Dilution:	ELISA: 1/1000. Western Blot: 1/100-1/500. Immunohistochemistry on Paraffin Sections: 1/50-1/100.
Reactivity:	Human
Host:	Rabbit
Isotype:	Ig
Clonality:	Polyclonal
Immunogen:	KLH conjugated synthetic peptide between 283-312 amino acids from the C-terminal region of human Olfactory receptor 8B8
Specificity:	This antibody recognizes Human Olfactory receptor 8B8 (C-term).
Formulation:	PBS containing 0.09% (W/V) Sodium Azide as preservative State: Aff - Purified State: Liquid purified Ig fraction
Concentration:	lot specific
Purification:	Protein A column, followed by peptide affinity purification
Conjugation:	Unconjugated
Storage:	Store undiluted at 2-8°C for one month or (in aliquots) at -20°C for longer. Avoid repeated freezing and thawing.
Stability:	Shelf life: one year from despatch.
Gene Name:	olfactory receptor family 8 subfamily B member 8
Database Link:	Entrez Gene 26493 Human Q15620



[View online »](#)

Background:

Olfactory receptors interact with odorant molecules in the nose, to initiate a neuronal response that triggers the perception of a smell. The olfactory receptor proteins are members of a large family of G-protein-coupled receptors (GPCR) arising from single coding-exon genes. Olfactory receptors share a 7-transmembrane domain structure with many neurotransmitter and hormone receptors and are responsible for the recognition and G protein-mediated transduction of odorant signals. The olfactory receptor gene family is the largest in the genome. The nomenclature assigned to the olfactory receptor genes and proteins for this organism is independent of other organisms.

Synonyms:

Olfactory receptor TPCR85, Olfactory-like receptor JCG8, OR8B8

Note:

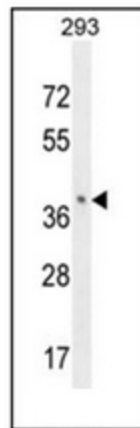
Molecular Weight: 34482 Da

Protein Families:

Druggable Genome, Transmembrane

Protein Pathways:

Olfactory transduction

Product images:

Western blot analysis of OR8B8 Antibody (C-term) in 293 cell line lysates (35ug/lane). This demonstrates the OR8B8 antibody detected the OR8B8 protein (arrow).