

Product datasheet for **AP53088PU-N**

OR5D13 (Center) Rabbit Polyclonal Antibody

Product data:

Product Type:	Primary Antibodies
Applications:	WB
Recommended Dilution:	ELISA: 1/1000. Western Blot: 1/100-1/500.
Reactivity:	Human
Host:	Rabbit
Isotype:	Ig
Clonality:	Polyclonal
Immunogen:	KLH conjugated synthetic peptide between 171-199 amino acids from the Central region of human Olfactory receptor 5D13
Specificity:	This antibody recognizes Human Olfactory receptor 5D13 (Center).
Formulation:	PBS containing 0.09% (W/V) Sodium Azide as preservative State: Aff - Purified State: Liquid purified Ig fraction
Concentration:	lot specific
Purification:	Protein A column, followed by peptide affinity purification
Conjugation:	Unconjugated
Storage:	Store undiluted at 2-8°C for one month or (in aliquots) at -20°C for longer. Avoid repeated freezing and thawing.
Stability:	Shelf life: one year from despatch.
Gene Name:	olfactory receptor family 5 subfamily D member 13 (gene/pseudogene)
Database Link:	Entrez Gene 390142 Human Q8NGL4



[View online »](#)

Background:

Olfactory receptors interact with odorant molecules in the nose, to initiate a neuronal response that triggers the perception of a smell. The olfactory receptor proteins are members of a large family of G-protein-coupled receptors (GPCR) arising from single coding-exon genes. Olfactory receptors share a 7-transmembrane domain structure with many neurotransmitter and hormone receptors and are responsible for the recognition and G protein-mediated transduction of odorant signals. The olfactory receptor gene family is the largest in the genome. The nomenclature assigned to the olfactory receptor genes and proteins for this organism is independent of other organisms.

Synonyms:

Olfactory receptor OR11-142, Olfactory receptor OR11-148, OR5D13

Note:

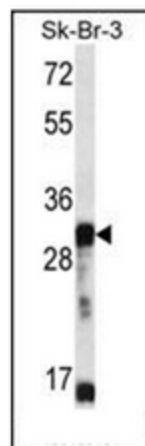
Molecular Weight: 35447 Da

Protein Families:

Transmembrane

Protein Pathways:

Olfactory transduction

Product images:

Western blot analysis of OR5D13 Antibody (Center) in SK-BR-3 cell line lysates (35ug/lane). This demonstrates the OR5D13 antibody detected the OR5D13 protein (arrow).