

Product datasheet for **AP53075PU-N**

OR52A1 (C-term) Rabbit Polyclonal Antibody

Product data:

Product Type:	Primary Antibodies
Applications:	FC, WB
Recommended Dilution:	ELISA: 1/1000. Western Blot: 1/100-1/500. Flow Cytometry: 1/10-1/50.
Reactivity:	Human
Host:	Rabbit
Isotype:	Ig
Clonality:	Polyclonal
Immunogen:	KLH conjugated synthetic peptide between 255-284 amino acids from the C-terminal region of human Olfactory receptor 52A1
Specificity:	This antibody recognizes Human Olfactory receptor 52A1 (C-term).
Formulation:	PBS containing 0.09% (W/V) Sodium Azide as preservative State: Aff - Purified State: Liquid purified Ig fraction
Concentration:	lot specific
Purification:	Protein A column, followed by peptide affinity purification
Conjugation:	Unconjugated
Storage:	Store undiluted at 2-8°C for one month or (in aliquots) at -20°C for longer. Avoid repeated freezing and thawing.
Stability:	Shelf life: one year from despatch.
Gene Name:	olfactory receptor family 52 subfamily A member 1
Database Link:	Entrez Gene 23538 Human Q9UKL2



[View online »](#)

Background:

Olfactory receptors interact with odorant molecules in the nose, to initiate a neuronal response that triggers the perception of a smell. The olfactory receptor proteins are members of a large family of G-protein-coupled receptors (GPCR) arising from single coding-exon genes. Olfactory receptors share a 7-transmembrane domain structure with many neurotransmitter and hormone receptors and are responsible for the recognition and G protein-mediated transduction of odorant signals. The olfactory receptor gene family is the largest in the genome. The nomenclature assigned to the olfactory receptor genes and proteins for this organism is independent of other organisms.

Synonyms:

Olfactory receptor OR11-319, HPFH1OR, Odorant receptor HOR3 β 4, OR52A1

Note:

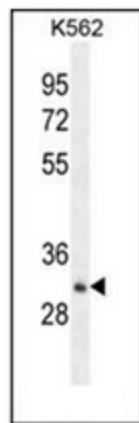
Molecular Weight: 35322 Da

Protein Families:

Druggable Genome, Transmembrane

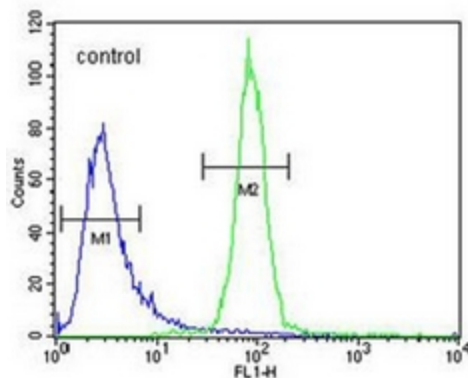
Protein Pathways:

Olfactory transduction

Product images:


K562

Western blot analysis of OR52A1 Antibody (C-term) in K562 cell line lysates (35ug/lane). This demonstrates the OR52A1 antibody detected the OR52A1 protein (arrow).



Flow cytometric analysis of K562 cells using OR52A1 Antibody (C-term) (right histogram) compared to a negative control cell (left histogram). FITC-conjugated goat-anti-rabbit secondary antibodies were used for the analysis.