

## Product datasheet for **AP53064PU-N**

### OR4N2 (N-term) Rabbit Polyclonal Antibody

#### Product data:

Product Type:	Primary Antibodies
Applications:	WB
Recommended Dilution:	<b>ELISA:</b> 1/1000. <b>Western Blot:</b> 1/100-1/500.
Reactivity:	Human
Host:	Rabbit
Isotype:	Ig
Clonality:	Polyclonal
Immunogen:	KLH conjugated synthetic peptide between 67-97 amino acids from the N-terminal region of human Olfactory receptor 4N2
Specificity:	This antibody recognizes Human Olfactory receptor 4N2 (N-term).
Formulation:	PBS containing 0.09% (W/V) Sodium Azide as preservative State: Aff - Purified State: Liquid purified Ig fraction
Concentration:	lot specific
Purification:	Protein A column, followed by peptide affinity purification
Conjugation:	Unconjugated
Storage:	Store undiluted at 2-8°C for one month or (in aliquots) at -20°C for longer. Avoid repeated freezing and thawing.
Stability:	Shelf life: one year from despatch.
Gene Name:	olfactory receptor family 4 subfamily N member 2
Database Link:	<a href="#">Entrez Gene 390429 Human</a> <a href="#">Q8NGD1</a>



[View online »](#)

**Background:**

Olfactory receptors interact with odorant molecules in the nose, to initiate a neuronal response that triggers the perception of a smell. The olfactory receptor proteins are members of a large family of G-protein-coupled receptors (GPCR) arising from single coding-exon genes. Olfactory receptors share a 7-transmembrane domain structure with many neurotransmitter and hormone receptors and are responsible for the recognition and G protein-mediated transduction of odorant signals. The olfactory receptor gene family is the largest in the genome. The nomenclature assigned to the olfactory receptor genes and proteins for this organism is independent of other organisms.

**Synonyms:**

Olfactory receptor OR14-8, Olfactory receptor OR14-13, OR4N2

**Note:**

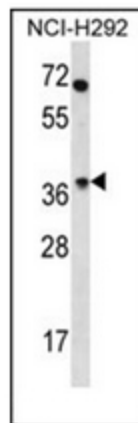
**Molecular Weight:** 34721 Da

**Protein Families:**

Transmembrane

**Protein Pathways:**

Olfactory transduction

**Product images:**

Western blot analysis of OR4N2 Antibody (N-term) in NCI-H292 cell line lysates (35ug/lane). This demonstrates the OR4N2 antibody detected the OR4N2 protein (arrow).