

## Product datasheet for **AP53044PU-N**

### OR2W5 (C-term) Rabbit Polyclonal Antibody

#### Product data:

Product Type:	Primary Antibodies
Applications:	WB
Recommended Dilution:	<b>ELISA:</b> 1/1000. <b>Western Blot:</b> 1/100-1/500.
Reactivity:	Human
Host:	Rabbit
Isotype:	Ig
Clonality:	Polyclonal
Immunogen:	KLH conjugated synthetic peptide between 282-311 amino acids from the C-terminal region of human Olfactory receptor 2W5
Specificity:	This antibody recognizes Human Olfactory receptor 2W5 (C-term).
Formulation:	PBS containing 0.09% (W/V) Sodium Azide as preservative State: Aff - Purified State: Liquid purified Ig fraction
Concentration:	lot specific
Purification:	Protein A column, followed by peptide affinity purification
Conjugation:	Unconjugated
Storage:	Store undiluted at 2-8°C for one month or (in aliquots) at -20°C for longer. Avoid repeated freezing and thawing.
Stability:	Shelf life: one year from despatch.
Gene Name:	olfactory receptor family 2 subfamily W member 5 (gene/pseudogene)
Database Link:	<a href="#">Entrez Gene 441932 Human</a> <a href="#">A6NFC9</a>



[View online »](#)

**Background:**

Olfactory receptors interact with odorant molecules in the nose, to initiate a neuronal response that triggers the perception of a smell. The olfactory receptor proteins are members of a large family of G-protein-coupled receptors (GPCR) arising from single coding-exon genes. Olfactory receptors share a 7-transmembrane domain structure with many neurotransmitter and hormone receptors and are responsible for the recognition and G protein-mediated transduction of odorant signals. The olfactory receptor gene family is the largest in the genome. The nomenclature assigned to the olfactory receptor genes and proteins for this organism is independent of other organisms. This olfactory receptor gene has a coding sequence that is comparable in length to other olfactory receptor genes, but it should be noted that a frameshift is present in the 3' coding region that disrupts the 7-transmembrane domain structure in the protein. It is unclear if the protein can function as an olfactory receptor or if an alternate function is served. For this reason, this gene has also been interpreted to be a pseudogene.

**Synonyms:**

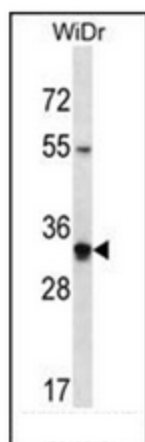
OR2W5, OR2W5P

**Note:**

**Molecular Weight:** 35528 Da

**Protein Families:**

Transmembrane

**Product images:**


Western blot analysis of OR2W5 Antibody (C-term) in WiDr cell line lysates (35ug/lane). This demonstrates the OR2W5 antibody detected the OR2W5 protein (arrow).