

## Product datasheet for **AP53043PU-N**

### OR2W3 (C-term) Rabbit Polyclonal Antibody

#### Product data:

Product Type:	Primary Antibodies
Applications:	FC, WB
Recommended Dilution:	<b>ELISA:</b> 1/1000. <b>Western Blot:</b> 1/100-1/500. <b>Flow Cytometry:</b> 1/10-1/50.
Reactivity:	Human
Host:	Rabbit
Isotype:	Ig
Clonality:	Polyclonal
Immunogen:	KLH conjugated synthetic peptide between 293-314 amino acids from the C-terminal region of human Olfactory receptor 2W3
Specificity:	This antibody recognizes Human Olfactory receptor 2W3 (C-term)
Formulation:	PBS containing 0.09% (W/V) Sodium Azide as preservative State: Aff - Purified State: Liquid purified Ig fraction
Concentration:	lot specific
Purification:	Protein A column, followed by peptide affinity purification
Conjugation:	Unconjugated
Storage:	Store undiluted at 2-8°C for one month or (in aliquots) at -20°C for longer. Avoid repeated freezing and thawing.
Stability:	Shelf life: one year from despatch.
Gene Name:	olfactory receptor family 2 subfamily W member 3
Database Link:	<a href="#">Entrez Gene 343171 Human Q7Z3T1</a>



[View online »](#)

**Background:**

Olfactory receptors interact with odorant molecules in the nose, to initiate a neuronal response that triggers the perception of a smell. The olfactory receptor proteins are members of a large family of G-protein-coupled receptors (GPCR) arising from single coding-exon genes. Olfactory receptors share a 7-transmembrane domain structure with many neurotransmitter and hormone receptors and are responsible for the recognition and G protein-mediated transduction of odorant signals. The olfactory receptor gene family is the largest in the genome. The nomenclature assigned to the olfactory receptor genes and proteins for this organism is independent of other organisms.

**Synonyms:**

OR2W3, OR2W3P, OR2W8P, Olfactory receptor OR1-49

**Note:**

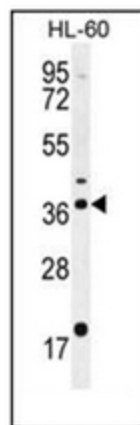
**Molecular Weight:** 34789 Da

**Protein Families:**

Druggable Genome, Transmembrane

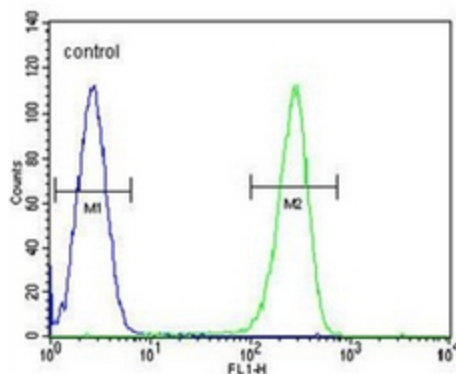
**Protein Pathways:**

Olfactory transduction

**Product images:**


Western blot analysis of OR2W3 Antibody (C-term) in HL-60 cell line lysates (35ug/lane). This demonstrates the OR2W3 antibody detected the OR2W3 protein (arrow)

**HL-60**



Flow cytometric analysis of HL-60 cells using OR2W3 Antibody (C-term) (right histogram) compared to a negative control cell (left histogram). FITC-conjugated goat-anti-rabbit secondary antibodies were used for the analysis.