

Product datasheet for **AP53034PU-N**

OR2M3 (C-term) Rabbit Polyclonal Antibody

Product data:

Product Type:	Primary Antibodies
Applications:	FC, WB
Recommended Dilution:	ELISA: 1/1000. Western Blot: 1/100-1/500. Flow Cytometry: 1/10-1/50.
Reactivity:	Human
Host:	Rabbit
Isotype:	Ig
Clonality:	Polyclonal
Immunogen:	KLH conjugated synthetic peptide between 247-276 amino acids from the C-terminal region of Human Olfactory receptor 2M3
Specificity:	This antibody recognizes Human Olfactory receptor 2M3 (C-term).
Formulation:	PBS containing 0.09% (W/V) Sodium Azide as preservative State: Aff - Purified State: Liquid purified Ig fraction
Concentration:	lot specific
Purification:	Protein A column, followed by peptide affinity purification
Conjugation:	Unconjugated
Storage:	Store undiluted at 2-8°C for one month or (in aliquots) at -20°C for longer. Avoid repeated freezing and thawing.
Stability:	Shelf life: one year from despatch.
Gene Name:	olfactory receptor family 2 subfamily M member 3
Database Link:	Entrez Gene 127062 Human Q8NG83



[View online »](#)

Background:

Olfactory receptors interact with odorant molecules in the nose, to initiate a neuronal response that triggers the perception of a smell. The olfactory receptor proteins are members of a large family of G-protein-coupled receptors (GPCR) arising from single coding-exon genes. Olfactory receptors share a 7-transmembrane domain structure with many neurotransmitter and hormone receptors and are responsible for the recognition and G protein-mediated transduction of odorant signals. The olfactory receptor gene family is the largest in the genome. The nomenclature assigned to the olfactory receptor genes and proteins for this organism is independent of other organisms.

Synonyms:

OR2M3, OR2M3P, OR2M6, Olfactory receptor OR1-54

Note:

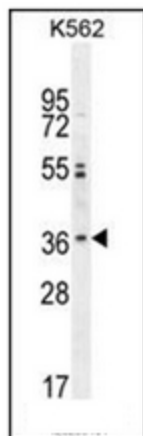
Molecular Weight: 34827 Da

Protein Families:

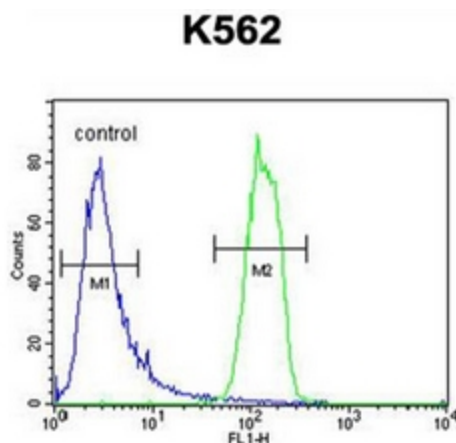
Transmembrane

Protein Pathways:

Olfactory transduction

Product images:


Western blot analysis of OR2M3 Antibody (C-term) in K562 cell line lysates (35ug/lane). This demonstrates the OR2M3 antibody detected the OR2M3 protein (arrow)



Flow cytometric analysis of K562 cells using OR2M3 Antibody (C-term) (right histogram) compared to a negative control cell (left histogram). FITC-conjugated goat-anti-rabbit secondary antibodies were used for the analysis