

Product datasheet for **AP53016PU-N**

OR11L1 (C-term) Rabbit Polyclonal Antibody

Product data:

Product Type:	Primary Antibodies
Applications:	FC, WB
Recommended Dilution:	ELISA: 1/1000. Western Blot: 1/100-1/500. Flow Cytometry: 1/10-1/50.
Reactivity:	Human
Host:	Rabbit
Isotype:	Ig
Clonality:	Polyclonal
Immunogen:	KLH conjugated synthetic peptide between 278-309 amino acids from the C-terminal region of Human Olfactory receptor 11L1
Specificity:	This antibody recognizes Human Olfactory receptor 11L1 (C-term).
Formulation:	PBS containing 0.09% (W/V) Sodium Azide as preservative State: Aff - Purified State: Liquid purified Ig fraction
Concentration:	lot specific
Purification:	Protein A column, followed by peptide affinity purification
Conjugation:	Unconjugated
Storage:	Store undiluted at 2-8°C for one month or (in aliquots) at -20°C for longer. Avoid repeated freezing and thawing.
Stability:	Shelf life: one year from despatch.
Gene Name:	olfactory receptor family 11 subfamily L member 1
Database Link:	Entrez Gene 391189 Human Q8NGX0



[View online »](#)

Background:

Olfactory receptors interact with odorant molecules in the nose, to initiate a neuronal response that triggers the perception of a smell. The olfactory receptor proteins are members of a large family of G-protein-coupled receptors (GPCR) arising from single coding-exon genes. Olfactory receptors share a 7-transmembrane domain structure with many neurotransmitter and hormone receptors and are responsible for the recognition and G protein-mediated transduction of odorant signals. The olfactory receptor gene family is the largest in the genome. The nomenclature assigned to the olfactory receptor genes and proteins for this organism is independent of other organisms.

Synonyms:

OR11L1

Note:

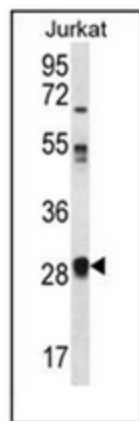
Molecular Weight: 36763 Da

Protein Families:

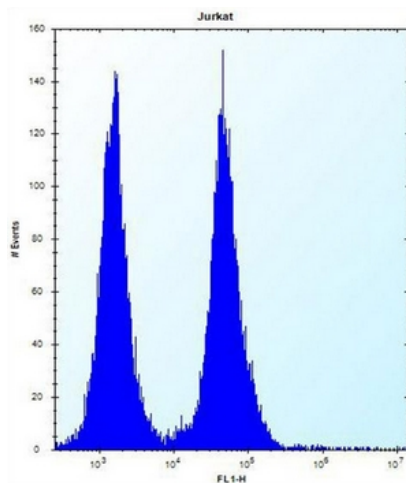
Transmembrane

Protein Pathways:

Olfactory transduction

Product images:


Western blot analysis of OR11L1 Antibody (C-term) in Jurkat cell line lysates (35ug/lane). This demonstrates the OR11L1 antibody detected the OR11L1 protein (arrow).



Flow cytometric analysis of Jurkat cells using OR11L1 Antibody (C-term) (right histogram) compared to a negative control cell (left histogram). FITC-conjugated donkey-anti-rabbit secondary antibodies were used for the analysis.