

Product datasheet for **AP53014PU-N**

Olfactory receptor 10X1 (OR10X1) (Center) Rabbit Polyclonal Antibody

Product data:

Product Type:	Primary Antibodies
Applications:	WB
Recommended Dilution:	ELISA: 1/1000. Western Blot: 1/100-1/500.
Reactivity:	Human, Mouse
Host:	Rabbit
Isotype:	Ig
Clonality:	Polyclonal
Immunogen:	KLH conjugated synthetic peptide between 88-118 amino acids from the Center region of Human Olfactory receptor 10X1
Specificity:	This antibody recognizes Human and Mouse Olfactory receptor 10X1 (Center).
Formulation:	PBS containing 0.09% (W/V) Sodium Azide as preservative State: Aff - Purified State: Liquid purified Ig fraction
Concentration:	lot specific
Purification:	Protein A column, followed by peptide affinity purification
Conjugation:	Unconjugated
Storage:	Store undiluted at 2-8°C for one month or (in aliquots) at -20°C for longer. Avoid repeated freezing and thawing.
Stability:	Shelf life: one year from despatch.
Gene Name:	olfactory receptor family 10 subfamily X member 1 (gene/pseudogene)
Database Link:	Entrez Gene 128367 Human Q8NGY0



[View online »](#)

Background:

Olfactory receptors interact with odorant molecules in the nose, to initiate a neuronal response that triggers the perception of a smell. The olfactory receptor proteins are members of a large family of G-protein-coupled receptors (GPCR) arising from single coding-exon genes. Olfactory receptors share a 7-transmembrane domain structure with many neurotransmitter and hormone receptors and are responsible for the recognition and G protein-mediated transduction of odorant signals. The olfactory receptor gene family is the largest in the genome. The nomenclature assigned to the olfactory receptor genes and proteins for this organism is independent of other organisms.

Synonyms:

OR10X1, OR10X1P, Olfactory receptor OR1-14

Note:

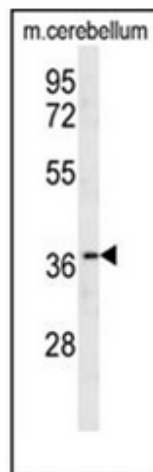
Molecular Weight: 36446 Da

Protein Families:

Transmembrane

Protein Pathways:

Olfactory transduction

Product images:

Western blot analysis of OR10X1 Antibody (Center) in mouse cerebellum tissue lysates (35ug/lane). This demonstrates the OR10X1 antibody detected the OR10X1 protein (arrow).