

## Product datasheet for **AP53013PU-N**

### OR10V1 (C-term) Rabbit Polyclonal Antibody

#### Product data:

Product Type:	Primary Antibodies
Applications:	WB
Recommended Dilution:	<b>ELISA:</b> 1/1000. <b>Western Blot:</b> 1/100-1/500.
Reactivity:	Human
Host:	Rabbit
Isotype:	Ig
Clonality:	Polyclonal
Immunogen:	KLH conjugated synthetic peptide between 280-309 amino acids from the C-terminal region of Human Olfactory receptor 10V1
Specificity:	This antibody recognizes Human Olfactory receptor 10V1 (C-term).
Formulation:	PBS containing 0.09% (W/V) Sodium Azide as preservative State: Aff - Purified State: Liquid purified Ig fraction
Concentration:	lot specific
Purification:	Protein A column, followed by peptide affinity purification
Conjugation:	Unconjugated
Storage:	Store undiluted at 2-8°C for one month or (in aliquots) at -20°C for longer. Avoid repeated freezing and thawing.
Stability:	Shelf life: one year from despatch.
Gene Name:	olfactory receptor family 10 subfamily V member 1
Database Link:	<a href="#">Entrez Gene 390201 Human Q8NGI7</a>



[View online »](#)

**Background:**

Olfactory receptors interact with odorant molecules in the nose, to initiate a neuronal response that triggers the perception of a smell. The olfactory receptor proteins are members of a large family of G-protein-coupled receptors (GPCR) arising from single coding-exon genes. Olfactory receptors share a 7-transmembrane domain structure with many neurotransmitter and hormone receptors and are responsible for the recognition and G protein-mediated transduction of odorant signals. The olfactory receptor gene family is the largest in the genome. The nomenclature assigned to the olfactory receptor genes and proteins for this organism is independent of other organisms.

**Synonyms:**

OR10V1, Olfactory receptor OR11-256

**Note:**

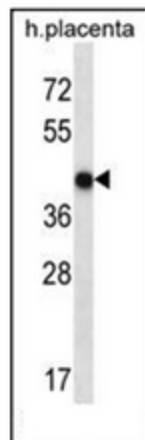
**Molecular Weight:** 34746 Da

**Protein Families:**

Transmembrane

**Protein Pathways:**

Olfactory transduction

**Product images:**

Western blot analysis of OR10V1 Antibody (C-term) in human placenta tissue lysates (35ug/lane). This demonstrates the OR10V1 antibody detected the OR10V1 protein (arrow).