

## Product datasheet for **AP53000PU-N**

### Mu Opioid Receptor (OPRM1) (Center) Rabbit Polyclonal Antibody

#### Product data:

Product Type:	Primary Antibodies
Applications:	FC, IHC, WB
Recommended Dilution:	<b>Western Blot:</b> 1/1000. <b>Flow Cytometry:</b> 1/10-1/50. <b>Immunohistochemistry on Paraffin Sections:</b> 1/10-1/50.
Reactivity:	Human, Monkey, Mouse, Porcine, Rat
Host:	Rabbit
Isotype:	Ig
Clonality:	Polyclonal
Immunogen:	KLH conjugated synthetic peptide between 161-187 amino acids from the Center region of human OPRM1
Specificity:	This antibody recognizes Human and Mouse OPRM1 (Center).
Formulation:	PBS containing 0.09% (W/V) Sodium Azide as preservative State: Aff - Purified State: Liquid purified Ig fraction
Concentration:	lot specific
Purification:	Protein A column, followed by peptide affinity purification
Conjugation:	Unconjugated
Storage:	Store undiluted at 2-8°C for one month or (in aliquots) at -20°C for longer. Avoid repeated freezing and thawing.
Stability:	Shelf life: one year from despatch.
Gene Name:	opiod receptor mu 1
Database Link:	<a href="#">Entrez Gene 18390 Mouse</a> <a href="#">Entrez Gene 25601 Rat</a> <a href="#">Entrez Gene 574141 Monkey</a> <a href="#">Entrez Gene 4988 Human</a> <a href="#">P35372</a>



[View online »](#)

**Background:** OPRM1 is the mu opioid receptor, which is the primary site of action for the most commonly used opioids, including morphine, heroin, fentanyl, and methadone. It is also the primary receptor for endogenous opioid peptides beta-endorphin (see POMC, MIM 176830) and the enkephalins (see PENK, MIM 131330). The OPRM1 receptor is a membrane of the G protein-coupled receptor family (Bond et al., 1998 [PubMed 9689128]). There are at least 3 types of opioid receptors, mu, kappa (OPRK1; MIM 165196), and delta, each with a distinct pharmacologic profile.

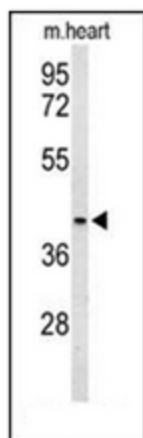
**Synonyms:** Mu-type opioid receptor, MOR1

**Note:** **Molecular Weight:** 44779 Da

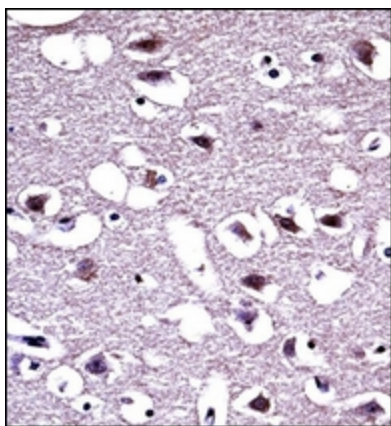
**Protein Families:** Druggable Genome, GPCR, Transmembrane

**Protein Pathways:** Neuroactive ligand-receptor interaction

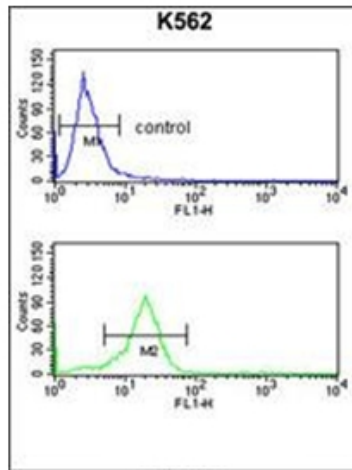
### Product images:



Western blot analysis of OPRM1 Antibody (Center) in mouse heart tissue lysates (35ug/lane). OPRM1 (arrow) was detected using the purified Pab.



Immunohistochemistry analysis in formalin fixed and paraffin embedded human brain tissue reacted with OPRM1 Antibody (Center), which was peroxidase conjugated to the secondary antibody and followed by DAB staining. This data demonstrates the use of OPRM1 Antibody (Center) for immunohistochemistry. Clinical relevance has not been evaluated.



Flow cytometry analysis of K562 cells using OPRM1 Antibody (Center) (bottom histogram) compared to a negative control cell (top histogram). FITC-conjugated goat-anti-rabbit secondary antibodies were used for the analysis.