

Product datasheet for **AP52999PU-N**

Osteopontin (SPP1) (N-term) Rabbit Polyclonal Antibody

Product data:

Product Type:	Primary Antibodies
Applications:	IF, IHC, WB
Recommended Dilution:	Western Blot: 1:1000 Immunofluorescence: 1:25 Immunohistochemistry on Paraffin Sections: 1:50~100
Reactivity:	Human
Host:	Rabbit
Isotype:	Ig
Clonality:	Polyclonal
Immunogen:	KLH conjugated synthetic peptide between 14-40 amino acids from the N-terminal region of Human Osteopontin (OPN-a/b)
Specificity:	This antibody recognizes Human Osteopontin (OPN-a/b) (N-term).
Formulation:	PBS containing 0.09% (W/V) Sodium Azide as preservative State: Aff - Purified State: Liquid purified Ig fraction
Concentration:	lot specific
Purification:	Protein A column, followed by peptide affinity purification
Conjugation:	Unconjugated
Storage:	Store undiluted at 2-8°C for one month or (in aliquots) at -20°C for longer. Avoid repeated freezing and thawing.
Stability:	Shelf life: one year from despatch.
Gene Name:	secreted phosphoprotein 1
Database Link:	Entrez Gene 6696 Human P10451
Background:	Binds tightly to hydroxyapatite. Appears to form an integral part of the mineralized matrix. Probably important to cell-matrix interaction. Acts as a cytokine involved in enhancing production of interferon-gamma and interleukin-12 and reducing production of interleukin-10 and is essential in the pathway that leads to type I immunity (By similarity).



[View online »](#)

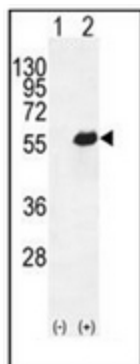
Synonyms: BNSP, OPN, SPP-1, Nephropontin, Uropontin

Note: **Molecular Weight:** 35423 Da

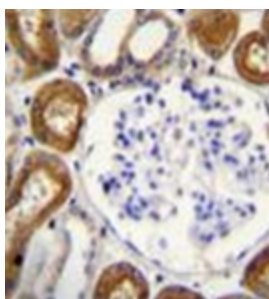
Protein Families: Druggable Genome, Secreted Protein

Protein Pathways: ECM-receptor interaction, Focal adhesion, Toll-like receptor signaling pathway

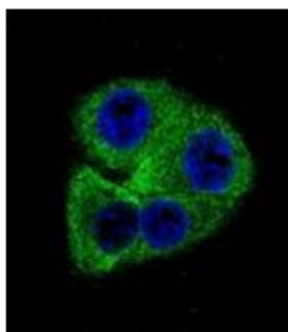
Product images:



Western blot analysis of OPN-a/b (arrow) using rabbit polyclonal OPN-a/b Antibody (N-term). 293 cell lysates (2 ug/lane) either nontransfected (Lane 1) or transiently transfected (Lane 2) with the OPN-a/b gene.



Immunohistochemistry analysis in formalin fixed and paraffin embedded human kidney tissue reacted with OPN-a/b Antibody (N-term) followed by peroxidase conjugation of the secondary antibody and DAB staining.



Confocal immunofluorescent analysis of OPN-a/b Antibody (N-term) with 293 cell followed by Alexa Fluor 488-conjugated goat anti-rabbit IgG (green). DAPI was used to stain the cell nuclear (blue).