

Product datasheet for **AP52998PU-N**

HNF6 (ONECUT1) (C-term) Rabbit Polyclonal Antibody

Product data:

Product Type:	Primary Antibodies
Applications:	WB
Recommended Dilution:	ELISA: 1/1000. Western Blot: 1/100-1/500.
Reactivity:	Human
Host:	Rabbit
Isotype:	Ig
Clonality:	Polyclonal
Immunogen:	KLH conjugated synthetic peptide between 363-393 amino acids from the C-terminal region of Human ONECUT1
Specificity:	This antibody recognizes Human ONECUT1 (C-term).
Formulation:	PBS containing 0.09% (W/V) Sodium Azide as preservative State: Aff - Purified State: Liquid purified Ig fraction
Concentration:	lot specific
Purification:	Protein A column, followed by peptide affinity purification
Conjugation:	Unconjugated
Storage:	Store undiluted at 2-8°C for one month or (in aliquots) at -20°C for longer. Avoid repeated freezing and thawing.
Stability:	Shelf life: one year from despatch.
Gene Name:	one cut homeobox 1
Database Link:	Entrez Gene 3175 Human Q9UBC0
Background:	ONECUT1 is a transcriptional activator. It binds the consensus sequence 5'-DHWATTGAYTWW-3' on a variety of gene promoters such as those of HNF3B and TTR. It is important for liver genes transcription.
Synonyms:	Hepatocyte nuclear factor 6, HNF-6, HNF6a



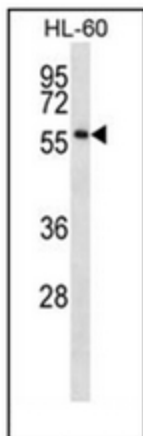
[View online »](#)

Note: **Molecular Weight:** 51023 Da

Protein Families: ES Cell Differentiation/IPS, Transcription Factors

Protein Pathways: Maturity onset diabetes of the young

Product images:



Western blot analysis of ONECUT1 Antibody (C-term) in HL-60 cell line lysates (35ug/lane). This demonstrates the ONECUT1 antibody detected the ONECUT1 protein (arrow).