

Product datasheet for **AP52996PU-N**

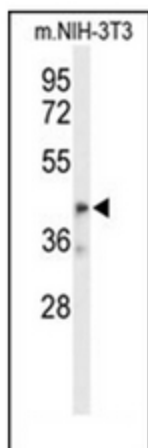
OLFML3 (Center) Rabbit Polyclonal Antibody

Product data:

Product Type:	Primary Antibodies
Applications:	WB
Recommended Dilution:	ELISA: 1/1000. Western Blot: 1/100-1/500.
Reactivity:	Human, Mouse
Host:	Rabbit
Isotype:	Ig
Clonality:	Polyclonal
Immunogen:	KLH conjugated synthetic peptide between 114~143 amino acids from the Central region of Human OLFML3
Specificity:	This antibody recognizes Human and Mouse OLFML3 (Center).
Formulation:	PBS containing 0.09% (W/V) Sodium Azide as preservative State: Purified State: Liquid purified Ig fraction
Concentration:	lot specific
Purification:	Saturated Ammonium Sulfate (SAS) precipitation followed by dialysis against PBS
Conjugation:	Unconjugated
Storage:	Store undiluted at 2-8°C for one month or (in aliquots) at -20°C for longer. Avoid repeated freezing and thawing.
Stability:	Shelf life: one year from despatch.
Gene Name:	olfactomedin like 3
Database Link:	Entrez Gene 56944 Human Q9NRN5
Synonyms:	Olfactomedin-like protein 3, HNOEL-iso, hOLF44
Note:	Molecular Weight: 46010 Da
Protein Families:	Secreted Protein



[View online »](#)

Product images:

Western blot analysis of OLFML3 Antibody (Center) in mouse NIH-3T3 cell line lysates (35ug/lane). OLFML3 (arrow) was detected using the purified Pab.