

Product datasheet for **AP52995PU-N**

GTPBP9 (OLA1) (N-term) Rabbit Polyclonal Antibody

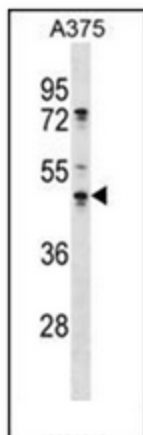
Product data:

Product Type:	Primary Antibodies
Applications:	WB
Recommended Dilution:	ELISA: 1/1000. Western Blot: 1/100-1/500.
Reactivity:	Human
Host:	Rabbit
Isotype:	Ig
Clonality:	Polyclonal
Immunogen:	KLH conjugated synthetic peptide between 42-71 amino acids from the N-terminal region of Human OLA1
Specificity:	This antibody recognizes Human OLA1 (N-term).
Formulation:	PBS containing 0.09% (W/V) Sodium Azide as preservative State: Aff - Purified State: Liquid purified Ig fraction
Concentration:	lot specific
Purification:	Protein A column, followed by peptide affinity purification
Conjugation:	Unconjugated
Storage:	Store undiluted at 2-8°C for one month or (in aliquots) at -20°C for longer. Avoid repeated freezing and thawing.
Stability:	Shelf life: one year from despatch.
Gene Name:	Obg-like ATPase 1
Database Link:	Entrez Gene 29789 Human Q9NTK5
Background:	OLA1 hydrolyzes ATP, and can also hydrolyze GTP with lower efficiency. Has lower affinity for GTP.
Synonyms:	Obg-like ATPase 1, GTP-binding protein 9
Note:	Molecular Weight: 44744 Da

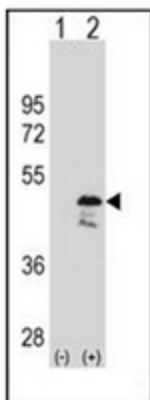


[View online »](#)

Product images:



Western blot analysis of GTPBP9 / OLA1 Antibody (N-term) in A375 cell line lysates (35ug/lane). This demonstrates the OLA1 antibody detected the OLA1 protein (arrow).



Western blot analysis of OLA1 (arrow) using GTPBP9 / OLA1 Antibody (N-term). 293 cell lysates (2 ug/lane) either nontransfected (Lane 1) or transiently transfected (Lane 2) with the OLA1 gene.