

Product datasheet for **AP52990PU-N**

ODF3B (N-term) Rabbit Polyclonal Antibody

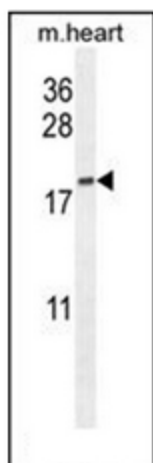
Product data:

Product Type:	Primary Antibodies
Applications:	IHC, WB
Recommended Dilution:	ELISA: 1/1000. Western Blot: 1/100-1/500. Immunohistochemistry on Paraffin Sections: 1/50-1/100.
Reactivity:	Human, Mouse
Host:	Rabbit
Isotype:	Ig
Clonality:	Polyclonal
Immunogen:	KLH conjugated synthetic peptide between 22-51 amino acids from the N-terminal region of human ODF3B
Specificity:	This antibody recognizes Human and Mouse ODF3B (N-term).
Formulation:	PBS containing 0.09% (W/V) Sodium Azide as preservative State: Aff - Purified State: Liquid purified Ig fraction
Concentration:	lot specific
Purification:	Protein A column, followed by peptide affinity purification
Conjugation:	Unconjugated
Storage:	Store undiluted at 2-8°C for one month or (in aliquots) at -20°C for longer. Avoid repeated freezing and thawing.
Stability:	Shelf life: one year from despatch.
Gene Name:	outer dense fiber of sperm tails 3B
Database Link:	Entrez Gene 440836 Human A8MYP8
Synonyms:	Outer dense fiber protein 3B,ODF3L3
Note:	Molecular Weight: 27280 Da

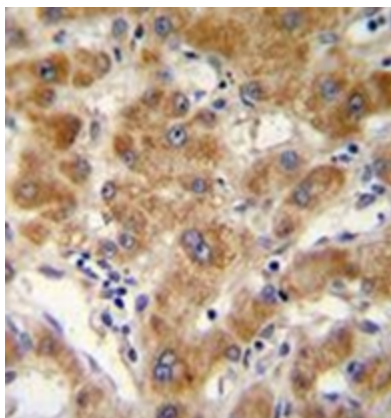


[View online »](#)

Product images:



Western blot analysis of ODF3B Antibody (N-term) in mouse heart tissue lysates (35ug/lane). This demonstrates the ODF3B antibody detected the ODF3B protein (arrow).



Immunohistochemistry analysis in formalin fixed and paraffin embedded human hepatocarcinoma reacted with ODF3B Antibody (N-term) followed by peroxidase conjugation of the secondary antibody and DAB staining.