

Product datasheet for **AP52989PU-N**

ODF3 (C-term) Rabbit Polyclonal Antibody

Product data:

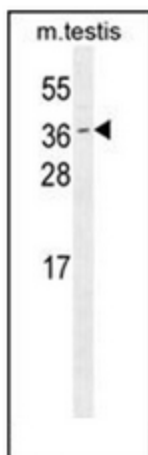
Product Type:	Primary Antibodies
Applications:	IHC, WB
Recommended Dilution:	ELISA: 1/1000. Western Blot: 1/100-1/500. Immunohistochemistry on Paraffin Sections: 1/50-1/100.
Reactivity:	Human, Mouse
Host:	Rabbit
Isotype:	Ig
Clonality:	Polyclonal
Immunogen:	KLH conjugated synthetic peptide between 177-207 amino acids from the C-terminal region of Human ODF3
Specificity:	This antibody recognizes Human and Mouse ODF3 (C-term).
Formulation:	PBS containing 0.09% (W/V) Sodium Azide as preservative State: Aff - Purified State: Liquid purified Ig fraction
Concentration:	lot specific
Purification:	Protein A column, followed by peptide affinity purification
Conjugation:	Unconjugated
Storage:	Store undiluted at 2-8°C for one month or (in aliquots) at -20°C for longer. Avoid repeated freezing and thawing.
Stability:	Shelf life: one year from despatch.
Gene Name:	outer dense fiber of sperm tails 3
Database Link:	Entrez Gene 69287 Mouse Entrez Gene 113746 Human Q96PU9
Background:	ODF3 is a component of sperm flagella outer dense fibers, which add stiffness, elastic recoil, and protection against shearing forces during sperm movement.
Synonyms:	SHIPPO1, TISP50, Outer dense fiber of sperm tails protein 3, Sperm tail protein SHIPPO 1, Outer dense fiber protein 3



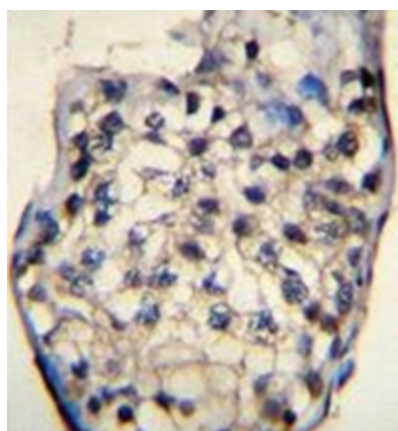
[View online »](#)

Note: **Molecular Weight:** 27710 Da

Product images:



Western blot analysis of ODF3 Antibody (C-term) in mouse testis tissue lysates (35ug/lane). This demonstrates the ODF3 antibody detected the ODF3 protein (arrow).



Immunohistochemistry analysis in formalin fixed and paraffin embedded human testis tissue reacted with ODF3 Antibody (C-term) followed by peroxidase conjugation of the secondary antibody and DAB staining.