

## Product datasheet for **AP52988PU-N**

### ODF2L (C-term) Rabbit Polyclonal Antibody

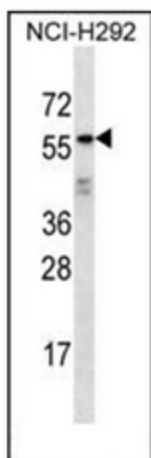
#### Product data:

Product Type:	Primary Antibodies
Applications:	IHC, WB
Recommended Dilution:	<b>ELISA:</b> 1/1000. <b>Western Blot:</b> 1/100-1/500. <b>Immunohistochemistry on Paraffin Sections:</b> 1/10-1/50.
Reactivity:	Human
Host:	Rabbit
Isotype:	Ig
Clonality:	Polyclonal
Immunogen:	KLH conjugated synthetic peptide between 541-572 amino acids from the C-terminal region of Human ODF2L
Specificity:	This antibody recognizes Human ODF2L (C-term).
Formulation:	PBS containing 0.09% (W/V) Sodium Azide as preservative State: Aff - Purified State: Liquid purified Ig fraction
Concentration:	lot specific
Purification:	Protein A column, followed by peptide affinity purification
Conjugation:	Unconjugated
Storage:	Store undiluted at 2-8°C for one month or (in aliquots) at -20°C for longer. Avoid repeated freezing and thawing.
Stability:	Shelf life: one year from despatch.
Gene Name:	outer dense fiber of sperm tails 2 like
Database Link:	<a href="#">Entrez Gene 57489 Human Q9ULJ1</a>
Background:	ODF2L belongs to the ODF2 family. The specific function of this protein remains unknown.
Synonyms:	KIAA1229
Note:	<b>Molecular Weight:</b> 60kd Isoform 5. 73728 Da

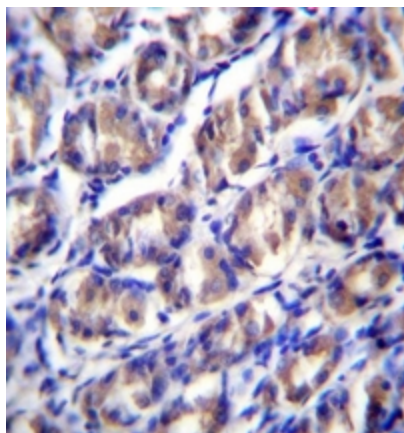


[View online »](#)

## Product images:



Western blot analysis of ODF2L Antibody (C-term) in NCI-H292 cell line lysates (35ug/lane). This demonstrates the ODF2L antibody detected the ODF2L protein (arrow).



Immunohistochemistry analysis in formalin fixed and paraffin embedded human stomach tissue reacted with ODF2L Antibody (C-term) followed by peroxidase conjugation of the secondary antibody and DAB staining.