

## Product datasheet for **AP52987PU-N**

### **P protein (OCA2) (N-term) Rabbit Polyclonal Antibody**

#### **Product data:**

Product Type:	Primary Antibodies
Applications:	WB
Recommended Dilution:	<b>ELISA:</b> 1/1000. <b>Western Blot:</b> 1/100-1/500.
Reactivity:	Human
Host:	Rabbit
Isotype:	Ig
Clonality:	Polyclonal
Immunogen:	KLH conjugated synthetic peptide between 118-146 amino acids from the N-terminal region of Human OCA2.
Specificity:	This antibody recognizes Human P protein (N-term).
Formulation:	PBS State: Aff - Purified State: Liquid purified Ig fraction Preservative: 0.09% Sodium Azide
Concentration:	lot specific
Purification:	Affinity Chromatography on Protein A
Conjugation:	Unconjugated
Storage:	Store undiluted at 2-8°C for one month or (in aliquots) at -20°C for longer. Avoid repeated freezing and thawing.
Stability:	Shelf life: one year from despatch.
Gene Name:	OCA2 melanosomal transmembrane protein
Database Link:	<a href="#">Entrez Gene 4948 Human Q04671</a>
Background:	This gene encodes the human homologue of the mouse p (pink-eyed dilution) gene. The encoded protein is believed to be an integral membrane protein involved in small molecule transport, specifically tyrosine - a precursor of melanin. Mutations in this gene result in type 2 oculocutaneous albinism. [provided by RefSeq].



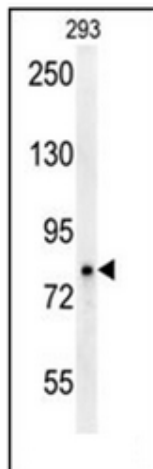
[View online »](#)

**Synonyms:** OCA2, Melanocyte-specific transporter protein, Pink-eyed dilution protein homolog, D15S12

**Note:** **Molecular Weight:** 92850 Da

**Protein Families:** Druggable Genome, Transmembrane

**Product images:**



Western blot analysis of P protein Antibody (N-term) in 293 cell line lysates (35ug/lane). This demonstrates the OCA2 antibody detected the OCA2 protein (arrow).