

Product datasheet for **AP52985PU-N**

OBFC2B (NABP2) (C-term) Rabbit Polyclonal Antibody

Product data:

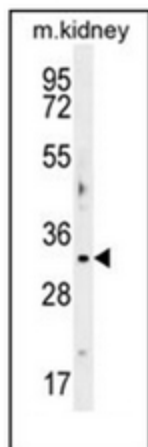
Product Type:	Primary Antibodies
Applications:	WB
Recommended Dilution:	ELISA: 1/1000. Western Blot: 1/100-1/500.
Reactivity:	Human, Mouse
Host:	Rabbit
Isotype:	Ig
Clonality:	Polyclonal
Immunogen:	KLH conjugated synthetic peptide between 180-211 amino acids from the C-terminal region of human OBFC2B
Specificity:	This antibody recognizes Human and Mouse OBFC2B (C-term).
Formulation:	PBS containing 0.09% (W/V) Sodium Azide as preservative State: Aff - Purified State: Liquid purified Ig fraction
Concentration:	lot specific
Purification:	Protein A column, followed by peptide affinity purification
Conjugation:	Unconjugated
Storage:	Store undiluted at 2-8°C for one month or (in aliquots) at -20°C for longer. Avoid repeated freezing and thawing.
Stability:	Shelf life: one year from despatch.
Gene Name:	Homo sapiens nucleic acid binding protein 2 (NABP2)
Database Link:	Entrez Gene 79035 Human Q9BQ15
Background:	Single-stranded DNA (ssDNA)-binding proteins, such as OBFC2B, are ubiquitous and essential for a variety of DNA metabolic processes, including replication, recombination, and detection and repair of damage (Richard et al., 2008 [PubMed 18449195]). [supplied by OMIM].
Synonyms:	SOSS-B1, SSB1, Sensor of ssDNA B1



[View online »](#)

Note: **Molecular Weight:** 22338 Da

Product images:



Western blot analysis of OBFC2B Antibody (C-term) in mouse kidney tissue lysates (35ug/lane). This demonstrates the OBFC2B antibody detected the OBFC2B protein (arrow).