

Product datasheet for **AP52983PU-N**

OBFC1 (STN1) (C-term) Rabbit Polyclonal Antibody

Product data:

Product Type:	Primary Antibodies
Applications:	WB
Recommended Dilution:	ELISA: 1/1000. Western Blot: 1/100-1/500.
Reactivity:	Human
Host:	Rabbit
Isotype:	Ig
Clonality:	Polyclonal
Immunogen:	KLH conjugated synthetic peptide between 276-306 amino acids from the C-terminal region of Human OBFC1
Specificity:	This antibody recognizes Human OBFC1 (C-term).
Formulation:	PBS containing 0.09% (W/V) Sodium Azide as preservative State: Aff - Purified State: Liquid purified Ig fraction
Concentration:	lot specific
Purification:	Protein A column, followed by peptide affinity purification
Conjugation:	Unconjugated
Storage:	Store undiluted at 2-8°C for one month or (in aliquots) at -20°C for longer. Avoid repeated freezing and thawing.
Stability:	Shelf life: one year from despatch.
Gene Name:	oligonucleotide/oligosaccharide binding fold containing 1
Database Link:	Entrez Gene 79991 Human Q9H668
Background:	OBFC1 and C17ORF68 (MIM 613129) are subunits of an alpha accessory factor (AAF) that stimulates the activity of DNA polymerase-alpha-primase (see MIM 176636), the enzyme that initiates DNA replication (Casteel et al., 2009 [PubMed 19119139]). OBFC1 also appears to function in a telomere-associated complex with C17ORF68 and TEN1 (C17ORF106; MIM 613130) (Miyake et al., 2009 [PubMed 19854130]).

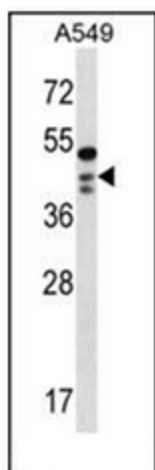


[View online »](#)

Synonyms: CST complex subunit STN1

Note: **Molecular Weight:** 42119 Da

Product images:



Western blot analysis of OBFC1 Antibody (C-term) in A549 cell line lysates (35ug/lane). This demonstrates the OBFC1 antibody detected the OBFC1 protein (arrow).