

Product datasheet for **AP52981PU-N**

NYX (N-term) Rabbit Polyclonal Antibody

Product data:

Product Type:	Primary Antibodies
Applications:	WB
Recommended Dilution:	ELISA: 1/1000. Western Blot: 1/100-1/500.
Reactivity:	Human
Host:	Rabbit
Isotype:	Ig
Clonality:	Polyclonal
Immunogen:	KLH conjugated synthetic peptide between 59~89 amino acids from the N-terminal region of Human Nyctalopin.
Specificity:	This antibody recognizes Human Nyctalopin (N-term).
Formulation:	PBS containing 0.09% (W/V) Sodium Azide as preservative State: Aff - Purified State: Liquid purified Ig fraction
Concentration:	lot specific
Purification:	Protein A column, followed by peptide affinity purification
Conjugation:	Unconjugated
Storage:	Store undiluted at 2-8°C for one month or (in aliquots) at -20°C for longer. Avoid repeated freezing and thawing.
Stability:	Shelf life: one year from despatch.
Gene Name:	nyctalopin
Database Link:	Entrez Gene 60506 Human Q9GZU5



[View online »](#)

Background:

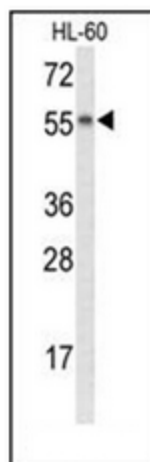
The product of this gene belongs to the small leucine-rich proteoglycan (SLRP) family of proteins. Defects in this gene are the cause of congenital stationary night blindness type 1 (CSNB1), also called X-linked congenital stationary night blindness (XLCSNB). CSNB1 is a rare inherited retinal disorder characterized by impaired scotopic vision, myopia, hyperopia, nystagmus and reduced visual acuity. The role of other SLRP proteins suggests that mutations in this gene disrupt developing retinal interconnections involving the ON-bipolar cells, leading to the visual losses seen in patients with complete CSNB. [provided by RefSeq].

Synonyms:

NYX, CLRP

Note:**Molecular Weight:** 52000 Da**Protein Families:**

Secreted Protein, Transmembrane

Product images:

Western blot analysis of Nyctalopin Antibody (N-term) in HL-60 cell line lysates (35ug/lane). NYX (arrow) was detected using the purified Pab.