

## Product datasheet for **AP52980PU-N**

### **NXPH4 (C-term) Rabbit Polyclonal Antibody**

#### **Product data:**

Product Type:	Primary Antibodies
Applications:	FC, WB
Recommended Dilution:	<b>ELISA:</b> 1/1000. <b>Western Blot:</b> 1/100-1/500. <b>Flow Cytometry:</b> 1/10-1/50.
Reactivity:	Human
Host:	Rabbit
Isotype:	Ig
Clonality:	Polyclonal
Immunogen:	KLH conjugated synthetic peptide between 226-255 amino acids from the C-terminal region of Human Neurexophilin-4
Specificity:	This antibody recognizes Human Neurexophilin-4 (C-term).
Formulation:	PBS containing 0.09% (W/V) Sodium Azide as preservative State: Aff - Purified State: Liquid purified Ig fraction
Concentration:	lot specific
Purification:	Protein A column, followed by peptide affinity purification
Conjugation:	Unconjugated
Storage:	Store undiluted at 2-8°C for one month or (in aliquots) at -20°C for longer. Avoid repeated freezing and thawing.
Stability:	Shelf life: one year from despatch.
Gene Name:	neurexophilin 4
Database Link:	<a href="#">Entrez Gene 11247 Human O95158</a>
Background:	An adhesion molecule that interacts with extracellular matrix molecules in developing teeth and may play important roles in differentiation and maintenance of odontoblasts as well as in dentin formation (By similarity).
Synonyms:	NXPH4, NPH4

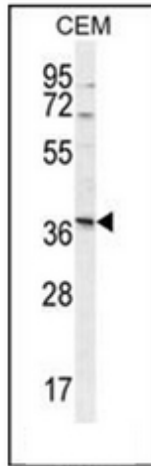


[View online »](#)

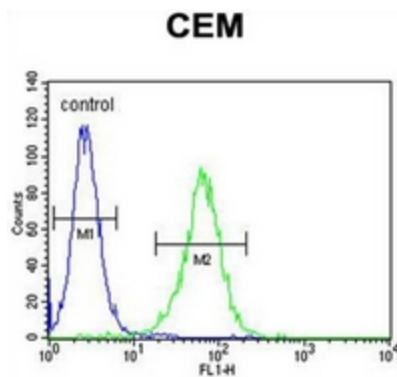
**Note:** **Molecular Weight:** 33065 Da

**Protein Families:** Secreted Protein

**Product images:**



Western blot analysis of Neurexophilin-4 Antibody (C-term) in CEM cell line lysates (35ug/lane). This demonstrates the NXPH4 antibody detected the NXPH4 protein (arrow).



Flow cytometric analysis of CEM cells using Neurexophilin-4 Antibody (C-term) (right histogram) compared to a negative control cell (left histogram). FITC-conjugated goat-anti-rabbit secondary antibodies were used for the analysis.