

Product datasheet for **AP52979PU-N**

NXP11 (N-term) Rabbit Polyclonal Antibody

Product data:

Product Type:	Primary Antibodies
Applications:	FC, IHC, WB
Recommended Dilution:	ELISA: 1/1000. Western Blot: 1/100-1/500. Flow Cytometry: 1/10-1/50. Immunohistochemistry on Paraffin Sections: 1/50-1/100.
Reactivity:	Human, Mouse
Host:	Rabbit
Isotype:	Ig
Clonality:	Polyclonal
Immunogen:	KLH conjugated synthetic peptide between 63~93 amino acids from the N-terminal region of Human Neurexophilin-1
Specificity:	This antibody recognizes Human and Mouse Neurexophilin-1 (N-term).
Formulation:	PBS containing 0.09% (W/V) Sodium Azide as preservative State: Aff - Purified State: Liquid purified Ig fraction
Concentration:	lot specific
Purification:	Protein A column, followed by peptide affinity purification
Conjugation:	Unconjugated
Storage:	Store undiluted at 2-8°C for one month or (in aliquots) at -20°C for longer. Avoid repeated freezing and thawing.
Stability:	Shelf life: one year from despatch.
Gene Name:	neurexophilin 1
Database Link:	Entrez Gene 18231 Mouse Entrez Gene 30010 Human P58417



[View online »](#)

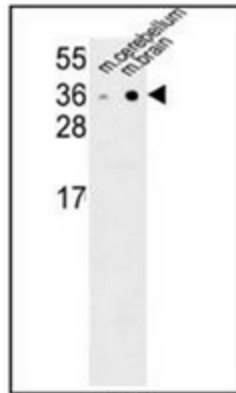
Background: NXPH1 is a secreted protein with a variable N-terminal domain, a highly conserved, N-glycosylated central domain, a short linker region, and a cysteine-rich C-terminal domain. This protein forms a very tight complex with alpha neurexins, a group of proteins that promote adhesion between dendrites and axons.

Synonyms: NXPH1, NPH1

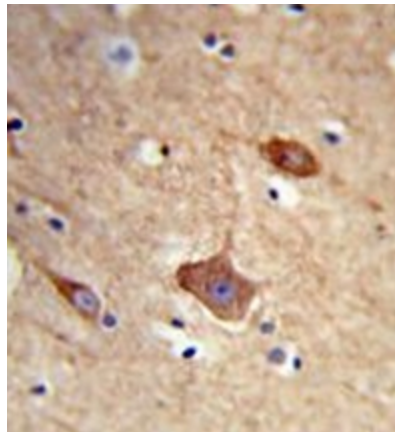
Note: **Molecular Weight:** 31082 Da

Protein Families: Secreted Protein

Product images:

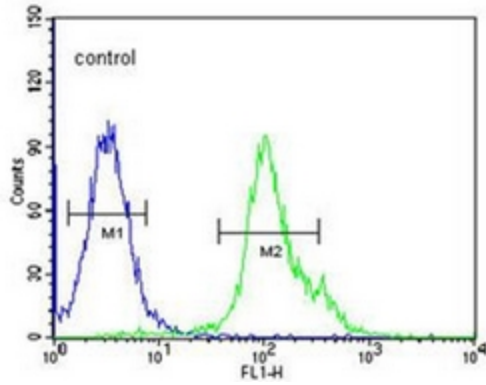


Western blot analysis of NXPH1 Antibody (N-term) in mouse cerebellum, brain tissue lysates (35ug/lane). This demonstrates the NXPH1 antibody detected the NXPH1 protein (arrow).



Formalin-fixed and paraffin-embedded human brain tissue reacted with NXPH1 Antibody (N-term), which was peroxidase-conjugated to the secondary antibody, followed by DAB staining.

293



Flow cytometric analysis of 293 cells using NXPH1 Antibody (N-term) (right histogram) compared to a negative control cell (left histogram). FITC-conjugated goat-anti-rabbit secondary antibodies were used for the analysis.