

Product datasheet for **AP52978PU-N**

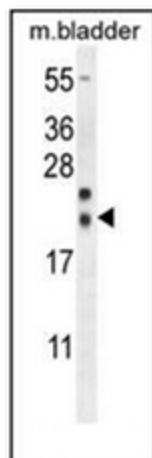
NXNL2 (Center) Rabbit Polyclonal Antibody

Product data:

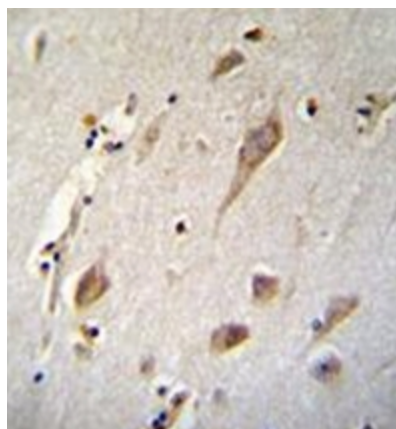
Product Type:	Primary Antibodies
Applications:	IHC, WB
Recommended Dilution:	ELISA: 1/1000. Western Blot: 1/100-1/500. Immunohistochemistry on Paraffin Sections: 1/50-1/100.
Reactivity:	Human, Mouse
Host:	Rabbit
Isotype:	Ig
Clonality:	Polyclonal
Immunogen:	KLH conjugated synthetic peptide between 87-116 amino acids from the Central region of human NXNL2
Specificity:	This antibody recognizes Human and Mouse NXNL2 (Center).
Formulation:	PBS containing 0.09% (W/V) Sodium Azide as preservative State: Aff - Purified State: Liquid purified Ig fraction
Concentration:	lot specific
Purification:	Protein A column, followed by peptide affinity purification
Conjugation:	Unconjugated
Storage:	Store undiluted at 2-8°C for one month or (in aliquots) at -20°C for longer. Avoid repeated freezing and thawing.
Stability:	Shelf life: one year from despatch.
Gene Name:	nucleoredoxin-like 2
Database Link:	Entrez Gene 75124 Mouse Entrez Gene 158046 Human Q5VZ03
Synonyms:	Nucleoredoxin-like protein 2, C9orf121
Note:	Molecular Weight: 17614 Da



[View online »](#)

Product images:

Western blot analysis of NXNL2 Antibody (Center) in mouse bladder tissue lysates (35ug/lane). This demonstrates the NXNL2 antibody detected the NXNL2 protein (arrow).



Immunohistochemistry analysis in formalin fixed and paraffin embedded human brain tissue reacted with NXNL2 Antibody (Center) followed by peroxidase conjugation of the secondary antibody and DAB staining.