

Product datasheet for **AP52977PU-N**

NXN (Center) Rabbit Polyclonal Antibody

Product data:

Product Type:	Primary Antibodies
Applications:	IHC, WB
Recommended Dilution:	ELISA: 1/1000. Western Blot: 1/100-1/500. Immunohistochemistry on Paraffin Sections: 1/10-1/50.
Reactivity:	Human, Mouse
Host:	Rabbit
Isotype:	Ig
Clonality:	Polyclonal
Immunogen:	KLH conjugated synthetic peptide between 220-249 amino acids from the Central region of Human Nucleoredoxin.
Specificity:	This antibody recognizes Human and Mouse Nucleoredoxin (Center).
Formulation:	PBS containing 0.09% (W/V) Sodium Azide as preservative State: Aff - Purified State: Liquid purified Ig fraction
Concentration:	lot specific
Purification:	Protein A column, followed by peptide affinity purification
Conjugation:	Unconjugated
Storage:	Store undiluted at 2-8°C for one month or (in aliquots) at -20°C for longer. Avoid repeated freezing and thawing.
Stability:	Shelf life: one year from despatch.
Gene Name:	nucleoredoxin
Database Link:	Entrez Gene 64359 Human Q6DKJ4
Background:	NXN functions as a redox-dependent negative regulator of the Wnt signaling pathway. May function as a transcriptional regulator. May regulate phosphatase 2A (By similarity).
Synonyms:	NXN, NRX

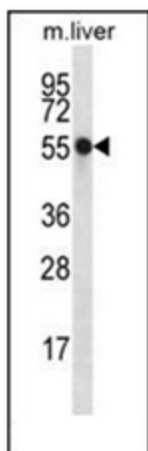


[View online »](#)

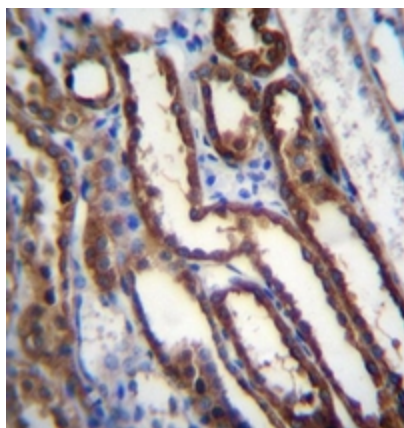
Note: **Molecular Weight:** 48392 Da

Protein Families: Druggable Genome

Product images:



Western blot analysis of Nucleoredoxin Antibody (Center) in mouse liver tissue lysates (35ug/lane). This demonstrates the NXN antibody detected the NXN protein (arrow).



Immunohistochemistry analysis in formalin fixed and paraffin embedded human kidney tissue reacted with Nucleoredoxin Antibody (Center) followed by peroxidase conjugation of the secondary antibody and DAB staining.