

Product datasheet for **AP52974PU-N**

NUP50 (Center) Rabbit Polyclonal Antibody

Product data:

Product Type:	Primary Antibodies
Applications:	WB
Recommended Dilution:	ELISA: 1/1000. Western Blot: 1/100-1/500.
Reactivity:	Human
Host:	Rabbit
Isotype:	Ig
Clonality:	Polyclonal
Immunogen:	KLH conjugated synthetic peptide between 223-252 amino acids from the Central region of human NUP50.
Specificity:	This antibody recognizes Human NUP50 (Center).
Formulation:	PBS containing 0.09% (W/V) Sodium Azide as preservative State: Aff - Purified State: Liquid purified Ig fraction
Concentration:	lot specific
Purification:	Protein A column, followed by peptide affinity purification
Conjugation:	Unconjugated
Storage:	Store undiluted at 2-8°C for one month or (in aliquots) at -20°C for longer. Avoid repeated freezing and thawing.
Stability:	Shelf life: one year from despatch.
Gene Name:	nucleoporin 50kDa
Database Link:	Entrez Gene 10762 Human Q9UKX7



[View online »](#)

Background:

The nuclear pore complex is a massive structure that extends across the nuclear envelope, forming a gateway that regulates the flow of macromolecules between the nucleus and the cytoplasm. Nucleoporins are the main components of the nuclear pore complex in eukaryotic cells. The protein encoded by this gene is a member of the FG-repeat containing nucleoporins that functions as a soluble cofactor in importin- α : β -mediated nuclear protein import. Pseudogenes of this gene are found on chromosomes 5, 6, and 14. Two transcript variants encoding different isoforms have been found for this gene.

Synonyms:

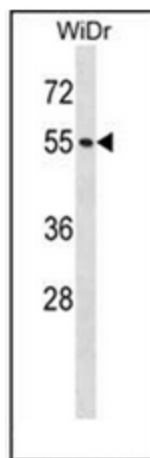
Nucleoporin 50 kDa, NPAP60L

Note:

Molecular Weight: 50144 Da

Protein Families:

Stem cell - Pluripotency

Product images:

Western blot analysis of NUP50 Antibody (Center) in WiDr cell line lysates (35ug/lane). This demonstrates the NUP50 antibody detected the NUP50 protein (arrow).