

Product datasheet for **AP52973PU-N**

Nup53 (NUP35) (C-term) Rabbit Polyclonal Antibody

Product data:

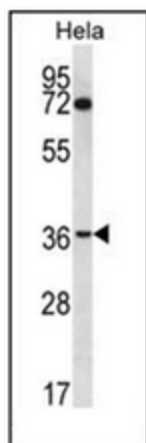
Product Type:	Primary Antibodies
Applications:	FC, WB
Recommended Dilution:	ELISA: 1/1000. Western Blot: 1/100-1/500. Flow Cytometry: 1/10-1/50.
Reactivity:	Human
Host:	Rabbit
Isotype:	Ig
Clonality:	Polyclonal
Immunogen:	KLH conjugated synthetic peptide between 296-326 amino acids from the C-terminal region of human NUP35
Specificity:	This antibody recognizes Human NUP35 (C-term).
Formulation:	PBS containing 0.09% (W/V) Sodium Azide as preservative State: Aff - Purified State: Liquid purified Ig fraction
Concentration:	lot specific
Purification:	Protein A column, followed by peptide affinity purification
Conjugation:	Unconjugated
Storage:	Store undiluted at 2-8°C for one month or (in aliquots) at -20°C for longer. Avoid repeated freezing and thawing.
Stability:	Shelf life: one year from despatch.
Gene Name:	nucleoporin 35kDa
Database Link:	Entrez Gene 129401 Human Q8NFH5
Background:	This gene encodes a member of the nucleoporin family. The protein is localized to the nuclear rim and is part of the nuclear pore complex (NPC). All molecules entering or leaving the nucleus either diffuse through or are actively transported by the NPC.
Synonyms:	MP44, NUP53, Nucleoporin NUP53, Nucleoporin Nup35



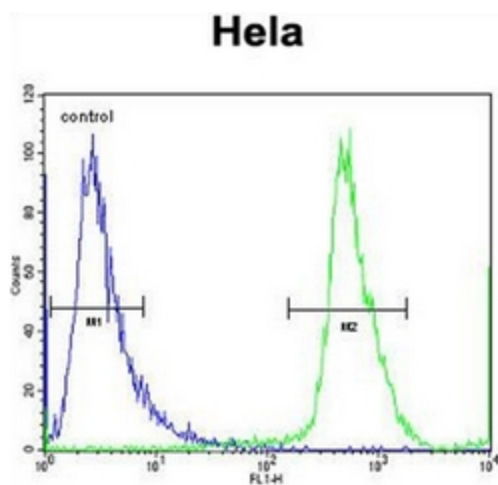
[View online »](#)

Note: **Molecular Weight:** 34774 Da

Product images:



Western blot analysis of NUP35 Antibody (C-term) in HeLa cell line lysates (35ug/lane). This demonstrates the NUP35 antibody detected the NUP35 protein (arrow).



Flow cytometric analysis of HeLa cells using NUP35 Antibody (C-term) (right histogram) compared to a negative control cell (left histogram). FITC-conjugated goat-anti-rabbit secondary antibodies were used for the analysis.