

## Product datasheet for **AP52972PU-N**

### GP210 (NUP210) (N-term) Rabbit Polyclonal Antibody

#### Product data:

Product Type:	Primary Antibodies
Applications:	FC, IHC, WB
Recommended Dilution:	<b>ELISA:</b> 1/1000. <b>Western Blot:</b> 1/1000. <b>Flow Cytometry:</b> 1/10-1/50. <b>Immunohistochemistry on Paraffin Sections:</b> 1/50-1/100.
Reactivity:	Human
Host:	Rabbit
Isotype:	Ig
Clonality:	Polyclonal
Immunogen:	KLH conjugated synthetic peptide between 202~231 amino acids from the N-terminal region of Human NUP210 / GP210
Specificity:	This antibody recognizes NUP210 / GP210 (N-term).
Formulation:	PBS containing 0.09% (W/V) Sodium Azide as preservative State: Aff - Purified State: Liquid purified Ig fraction
Concentration:	lot specific
Purification:	Protein A column, followed by peptide affinity purification
Conjugation:	Unconjugated
Storage:	Store undiluted at 2-8°C for one month or (in aliquots) at -20°C for longer. Avoid repeated freezing and thawing.
Stability:	Shelf life: one year from despatch.
Gene Name:	nucleoporin 210kDa
Database Link:	<a href="#">Entrez Gene 23225 Human</a> <a href="#">Q8TEM1</a>



[View online »](#)

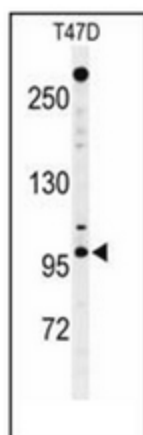
**Background:** NUP210 nuclear pore complex is a massive structure that extends across the nuclear envelope, forming a gateway that regulates the flow of macromolecules between the nucleus and the cytoplasm. Nucleoporins are the main components of the nuclear pore complex in eukaryotic cells. The protein encoded by this gene is a membrane-spanning glycoprotein that is a major component of the nuclear pore complex.

**Synonyms:** POM210, Nuclear pore protein gp210, KIAA0906, Nucleoporin Nup210

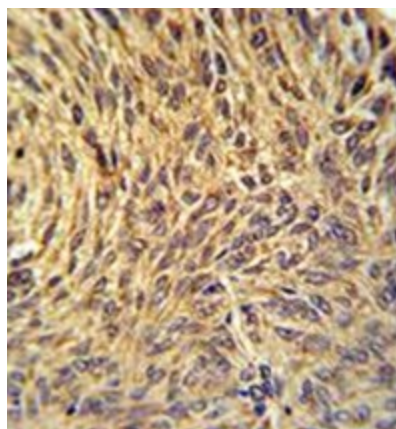
**Note:** **Molecular Weight:** 205111 Da (Isoform 2.;105 kDa) Da

**Protein Families:** Transmembrane

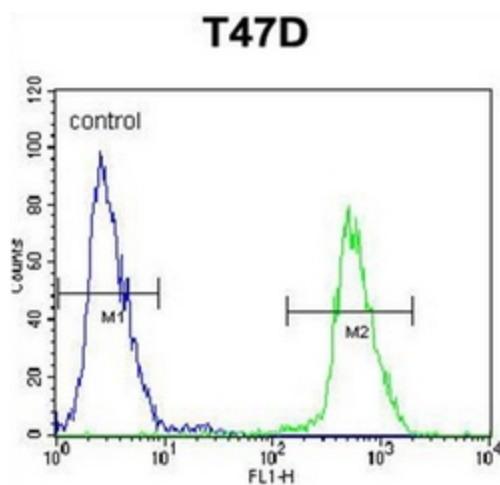
### Product images:



Western blot analysis of NUP210 / GP210 Antibody (N-term) in T47D cell line lysates (35ug/lane). NUP210 (arrow) was detected using the purified Pab.



Immunohistochemistry analysis in formalin fixed and paraffin embedded human lung carcinoma reacted with NUP210 / GP210 Antibody (N-term) followed by peroxidase conjugation of the secondary antibody and DAB staining.



Flow cytometric analysis of T47D cells using NUP210 / GP210 Antibody (N-term) (right histogram) compared to a negative control cell (left histogram). FITC-conjugated goat-anti-rabbit secondary antibodies were used for the analysis.