

Product datasheet for **AP52971PU-N**

NUP160 (Center) Rabbit Polyclonal Antibody

Product data:

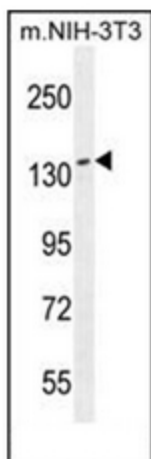
Product Type:	Primary Antibodies
Applications:	IHC, WB
Recommended Dilution:	ELISA: 1/1000. Western Blot: 1/100-1/500. Immunohistochemistry on Paraffin Sections: 1/50-1/100.
Reactivity:	Human, Mouse
Host:	Rabbit
Isotype:	Ig
Clonality:	Polyclonal
Immunogen:	KLH conjugated synthetic peptide between 401-429 amino acids from the Central region of Human NUP160.
Specificity:	This antibody recognizes Human and Mouse NUP160 (Center).
Formulation:	PBS containing 0.09% (W/V) Sodium Azide as preservative State: Aff - Purified State: Liquid purified Ig fraction
Concentration:	lot specific
Purification:	Protein A column, followed by peptide affinity purification
Conjugation:	Unconjugated
Storage:	Store undiluted at 2-8°C for one month or (in aliquots) at -20°C for longer. Avoid repeated freezing and thawing.
Stability:	Shelf life: one year from despatch.
Gene Name:	nucleoporin 160kDa
Database Link:	Entrez Gene 59015 Mouse Entrez Gene 23279 Human Q12769
Background:	NUP160 is 1 of up to 60 proteins that make up the 120-MD nuclear pore complex, which mediates nucleoplasmic transport.
Synonyms:	KIAA0197, NUP120, Nucleoporin Nup160



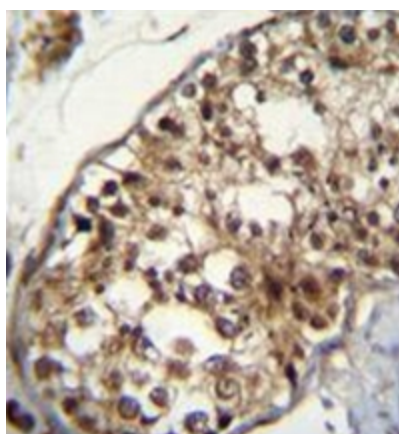
[View online »](#)

Note: **Molecular Weight:** 162121 Da

Product images:



Western blot analysis of NUP160 Antibody (Center) in mouse NIH-3T3 cell line lysates (35ug/lane). This demonstrates the NUP160 antibody detected the NUP160 protein (arrow).



Immunohistochemistry analysis in formalin fixed and paraffin embedded human testis tissue reacted with NUP160 Antibody (Center) followed by peroxidase conjugation of the secondary antibody and DAB staining.