

Product datasheet for **AP52963PU-N**

NUDT22 (C-term) Rabbit Polyclonal Antibody

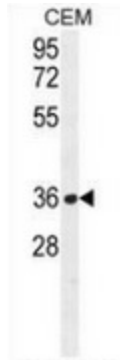
Product data:

Product Type:	Primary Antibodies
Applications:	FC, IHC, WB
Recommended Dilution:	Flow cytometry: 1/10-1/50. Immunohistochemistry on Paraffin sections: 1/50-1/100. Western blot: 1/100-1/500. Enzyme immunoassay: 1/1000.
Reactivity:	Human
Host:	Rabbit
Isotype:	Ig
Clonality:	Polyclonal
Immunogen:	Synthetic peptide - KLH conjugated - corresponding to the C-terminal region (between 227-257aa) of human NUDT22.
Specificity:	This antibody recognizes NUDT22 at C-term.
Formulation:	PBS with 0.09% (W/V) Sodium azide State: Aff - Purified State: Liquid purified Ig fraction
Concentration:	lot specific
Purification:	Purified through a Protein A column followed by peptide affinity purification
Conjugation:	Unconjugated
Storage:	Store undiluted at 2-8°C for one month or (in aliquots) at -20°C for longer. Avoid repeated freezing and thawing.
Stability:	Shelf life: one year from despatch.
Gene Name:	nudix hydrolase 22
Database Link:	Entrez Gene 84304 Human Q9BRQ3
Synonyms:	MGC13045
Note:	Molecular Weight: 32608 Da

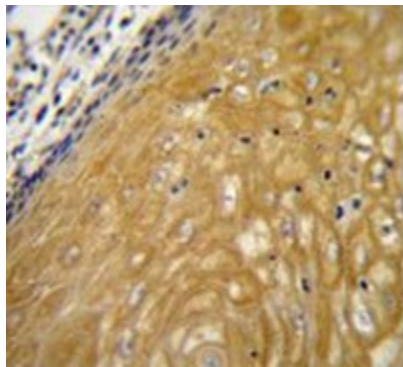


[View online »](#)

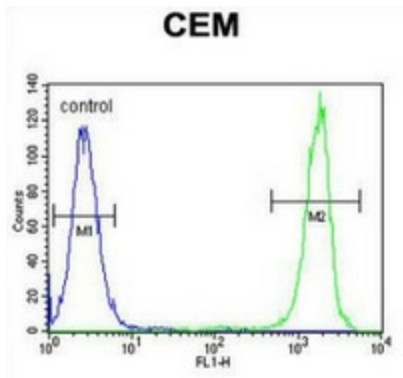
Product images:



Western blot analysis in CEM cell line lysates (35ug/lane) using NUDT22 antibody. (C-term). This demonstrates the NUDT22 antibody detected the NUDT22 protein (arrow).



Immunohistochemistry analysis in human esophageal carcinoma (Formalin-fixed, Paraffin-embedded) using NUDT22 antibody. (C-term), followed by peroxidase conjugation of the secondary antibody and DAB staining. This data demonstrates the use of NUDT22 antibody for IHC; Clinical relevance has not been evaluated.



Flow cytometric analysis of CEM cells (right histogram) compared to a negative control cell (left histogram) using NUDT22 antibody. (C-term), followed by FITC-conjugated goat-anti-rabbit secondary antibodies.