

Product datasheet for **AP52959PU-N**

NUDT15 (C-term) Rabbit Polyclonal Antibody

Product data:

Product Type:	Primary Antibodies
Applications:	FC, IHC, WB
Recommended Dilution:	Flow cytometry: 1/10-1/50. Immunohistochemistry on Paraffin sections: 1/50-1/100. Western blot: 1/1000. Enzyme immunoassay: 1/1000.
Reactivity:	Human, Mouse
Host:	Rabbit
Isotype:	Ig
Clonality:	Polyclonal
Immunogen:	Synthetic peptide - KLH conjugated - corresponding to the C-terminal region (between 89-118aa) of human NUDT15.
Specificity:	This antibody recognizes NUDT15.
Formulation:	PBS with 0.09% (W/V) Sodium azide State: Aff - Purified State: Liquid purified Ig fraction
Concentration:	lot specific
Purification:	Purified through a Protein A column followed by peptide affinity purification
Conjugation:	Unconjugated
Storage:	Store undiluted at 2-8°C for one month or (in aliquots) at -20°C for longer. Avoid repeated freezing and thawing.
Stability:	Shelf life: one year from despatch.
Gene Name:	nudix hydrolase 15
Database Link:	Entrez Gene 55270 Human Q9NV35



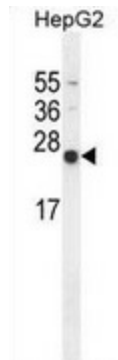
[View online »](#)

Background: Mediates the hydrolysis of some nucleoside diphosphate derivatives. Can degrade 8-oxo-dGTP in vitro, suggesting that it may remove an oxidatively damaged form of guanine (7,8-dihydro-8-oxoguanine) from DNA and the nucleotide pool, thereby preventing misincorporation of 8-oxo-dGTP into DNA thus preventing A:T to C:G transversions. Its substrate specificity in vivo however remains unclear (By similarity). May have a role in DNA synthesis and cell cycle progression through the interaction with PCNA.

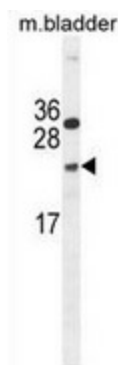
Synonyms: MTH2, MutT homolog 2, Nudix motif 15

Note: **Molecular Weight:** 18609 Da

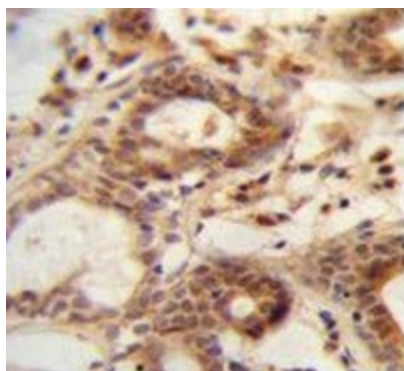
Product images:



Western blot analysis in HepG2 cell line lysates (35ug/lane) using NUDT15 antibody. (C-term). This demonstrates the NUDT15 antibody detected the NUDT15 protein (arrow).



Western blot analysis in mouse bladder tissue lysates (35ug/lane) using NUDT15 antibody. (C-term). This demonstrates the NUDT15 antibody detected the NUDT15 protein (arrow).



Immunohistochemistry analysis in human breast tissue (Formalin-fixed, Paraffin-embedded) using NUDT15 antibody. (C-term), followed by peroxidase conjugation of the secondary antibody and DAB staining. This data demonstrates the use of the NUDT15 antibody for IHC. Clinical relevance has not been evaluated.